

Catalog	Unit
TBS10407-100	100 µg
TBS10407-1	1 mg

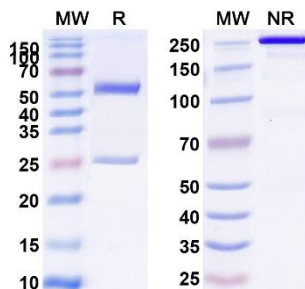
**Description**

Tribio Anti-Human GPC3 & CD3E Antibody is a bispecific antibody targeting GPC3 and CD3E, capable of simultaneously binding to the GPC3 antigen expressed on tumor cells and the CD3E molecule on T cells. By recruiting and activating T cells, it enhances the specific cytotoxic activity against GPC3-positive tumor cells. This antibody is widely used in cancer immunotherapy research and bispecific antibody development, particularly for mechanistic studies, cell-based functional assays, and immunotherapy evaluation in hepatocellular carcinoma, hepatoblastoma, and other GPC3-overexpressing solid tumors.

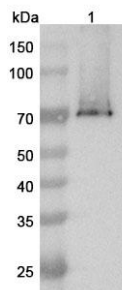
**Product Details**

<b>Applications:</b>	ELISA, Bioactivity: FACS, Functional assay, Research in vivo
<b>Species reactivity:</b>	Human
<b>Host:</b>	Humanized
<b>Target:</b>	GPC3, MXR7, GTR2-2, Glypican-3, Intestinal protein OCI-5, OCI5, T3E, T-cell surface antigen T3/Leu-4 epsilon chain, CD3e, CD3E, T-cell surface glycoprotein CD3 epsilon chain
<b>Isotype:</b>	IgG4
<b>Uniprot:</b>	P51654 & P07766
<b>Concentration:</b>	3 mg/ml
<b>Purity:</b>	>95%
<b>Formulation:</b>	Liquid
<b>Storage buffer:</b>	0.01M PBS, pH 7.4
<b>Purification:</b>	Protein A/G purified from cell culture supernatant.
<b>Clonality:</b>	Monoclonal
<b>Storage:</b>	Avoid repeated freeze-thaw cycles. -20°C for 12 months; -80°C for long-term storage.

**Data Image**

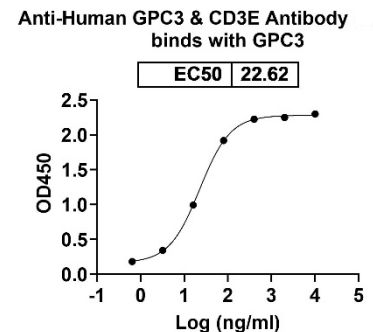


**Fig. 1. SDS-PAGE for Research Grade Anti-Human GPC3 & CD3E Antibody**



**Fig. 2. Western blot analysis was performed using anti-GPC3 monoclonal antibody at 1µg/mL on various samples.**

**Lane 1: HepG2 cell lysate**



**Fig. 3. Detects GPC3 in indirect ELISAs.**

**For research use only.**