

Specialized Western Blot Imaging System

Western blot as a classical protein quantification technique has been perceived as the golden standard for protein expression studies and has become an essential experiment for every molecular biology laboratory. However, the development of western blot technology has been very slow, among which the imaging detection technology has suffered from stagnant development for over 20 years.

The earliest imaging method adopted was DAB colorimetry, which had been eliminated because of its lack of sensitivity and quantitative range.

The chemiluminescence method was later emerged. There are 2 imaging methods used- darkroom filming and cold CCD imaging.

- The darkroom filming method features a very limited quantitative range that makes accurate quantitation even impossible. Therefore, it is gradually abandoned by scientists.
- Nowadays cold CCD imaging remains widely used. The method of relying on lens to fulfil the imaging process makes the imaging distance too long, plus the small-sized chip, thus resulting in even lower imaging sensitivity compared to darkroom filming. Its quantitative range is also too narrow to meet the increasing requirements of scientific research.

Some people also try to use fluorescence imaging to do western imaging. Yet due to the fluorescence background interference of the film, fluorescence methods are far less sensitive than chemiluminescence methods, so they are also rarely used.

The revolutionary touch chemiluminescence imaging technology of e-Blot makes full advantage of the high sensitivity of the chemiluminescence method, overcomes many shortcomings of cold CDD imaging, and improves the imaging sensitivity, 2-3 logs higher quantitative range and efficiency, leading western imaging into a whole new era.

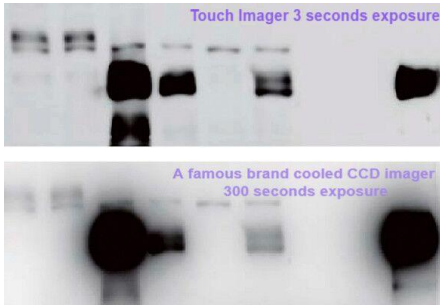
More Applications: Southern Blot, Northern Blot, Dot Blot, Isotope Imaging

Specification



Capture mode	Auto/Manual
Full well capacity	1,250,000.00 electrons
Data transferring speed	1000Mbps
Light Sources Control	Chemoluminescence, Epi-white
Start-up waiting	No
Exposure time	> 95% Samples are imaged within 1sec
Photo sensor chip	158cm ²
User account management	Multi-user management
Net weight	4.35 KG
Dimension (L x W x H)	27cm×20.6cm×5.4cm
Power supply	100–250 V
Operating temperature	4–30°C
Operating humidity	10–85% relative humidity (noncondensing)

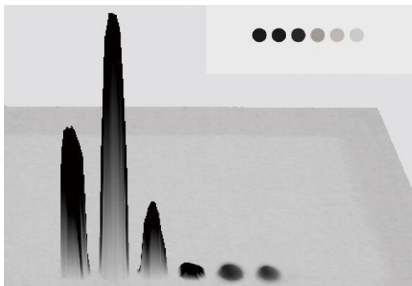
New technology allows you to design experiments with confidence



Wide quantitative range, strong and weak signals are clearly visible

Ultra-sensitive imaging chips come with enhanced sensors that pick up even the faintest of signals in a sample that traditional x-ray film and CCD might miss and capture them all in a single image.

Signal variation is properly displayed on the image, helping scientists retrieve valuable data from even the rarest and low-abundant protein bands that will push forward research performed on the subject.



Obtain Results Faster

95% experiments done within seconds

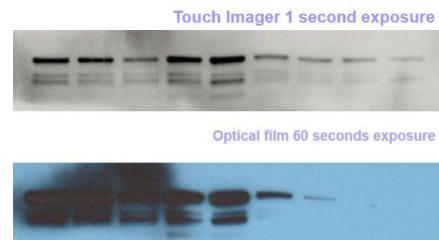
Thanks to the increased sensitivity and range of our Touch Imager’s photosensitive chip, 95% of the sample is captured in just 1 second.

The captured image of the sample provides accurate results based on specified details, eliminating the need to redo the experiment and significantly cutting time consumption by a great margin. Image editing and analysis are also available in the instrument for detailed images that help in better research.



Two orders of magnitude higher than cooled CCD on sensitivity

While most x-ray films and cooled CCD western blot imaging systems may skip on weaker signals on a given sample, the e-Blot Touch Imager’s sensitive imaging chips bring them all out. Adjustable exposure level allows for stronger bands to be regulated while weaker signals are encouraged to appear for accurate data acquisition. The enhanced sensitivity also eliminates false findings that could consume more time for samples to be repeated and images recaptured.



Two orders of magnitude higher than cooled CCD on quantitative range

As image capture is conducted through direct contact rather than distance capture, the dynamic range of the Touch Imager is proportionally higher than modern cooled CCD technology that the market offers.

The extended dynamic range also ensures that all details needed from the sample is recorded accurately, displaying various bends with precision accuracy.



Easy-To-Use By Everyone in The Lab

New technology does not need to be difficult to use, as our Touch Imagers feature a streamlined image capturing process that users can easily adapt to.

Simply load the sample into the device, press the designated button, and the image is captured into the system and ready for analysis. We made the process easy so anyone can use the Touch Imager and expect consistent results every time.

- Load the sample
- Press the button
- Get the result

E-blot Touch Viewer: All-in-One Software Automating Your Result Documentation

Having all the software and imaging applications on one handy instrument ensures that the needed images are captured for optimal data acquisition.

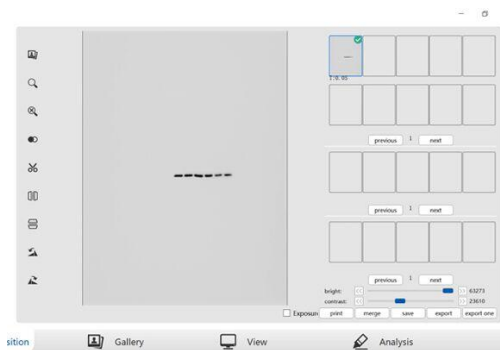


Image Acquisition: Capture Your Image Right Away

The built-in software makes it easy to take the imaging procedure by controlling the high-accuracy photosensitive chips utilized for revolutionary contact imaging.

The smart interface provides an image preview to aid image capture, with features like auto-focus and saturation to capture the right proteins.

Image Management: View and Keep Images Organized

The intuitive user interface allows direct access to images for reviewing, transferring, and sorting. View images immediately after capture, with a visible paper trail for proper documentation.

Export or share images using network connections or external drives, allowing for easy transfer of shared data for faster analysis and research.

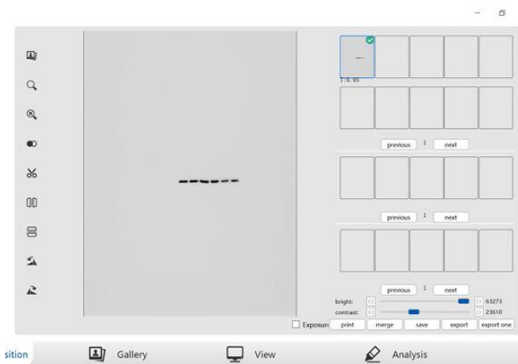


Image Editing: Tailor the Images Your Way

Freely edit the captured images to highlight the data required for meetings, presentations, posters, and conferences with our built-in editing feature.

The easy-to-use software can adjust images, enhance and magnify image resolution you need, and combine images for better and more detailed data acquisition.

* Rotate *Zoom in *Zoom out *Crop *Flip



Image Analysis: Boost Your Analyzing Process

Perform on-the-spot or comparative analysis on your captured images using our reliable and accurate analytics feature. After capturing the image, you can easily get the analysis result through either automatic or manual analysis. The Image Analysis feature streamlines the analytical process by handling validation tests, statistical review, and comparative analysis studies all within the system, reducing possible variations and errors in the process.