

EZ BLOT One-Touch Wet Transfer System

ALL YOU NEED IS

- Load Sandwich.
- Select Gel Concentration
- Press to Start

NO MORE

- Condition Optimization
- Program Setup
- Long Transfer Times

NO MORE

- Large Buffer Volume
- Filter Paper
- Extra Ice Pack

EZ BLOT Specifications

Specification	Details
Function	Western blot wet transfer
Transfer Method	Vertical fast transfer
Gel Size	Mini (96 mm × 80 mm)
Gel Thickness	0.75–1.5 mm
Membrane Compatibility	NC & PVDF Membranes
Protein MW Range	Efficient transfer for 10–250 kDa
Transfer Time*	As fast as 7 min
Time Range	Adjustable 0–99 min
Working Temperature	10–40°C
Working Humidity	0–80% Relative Humidity
Universal Input	100–240 V AC, 50–60 Hz
Universal Output	Adjustable 10–60 V DC
Dimensions (L × W × H)	335 mm × 160 mm × 105 mm
Weight	4.24 kg



EZ BLOT Transfer Module Schematic

4× Faster Transfer Speed:

- Direct electrode-to-sponge contact.
- Maximized electric field strength.
- 4X faster than traditional tank blotting.

Active Cooling System Prevents Overheating

- Built-in thermal protection.
- Ensures sharp, non-distorted bands.

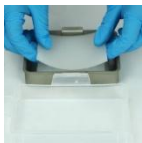
Eco-Friendly Consumption

- Only 110 mL buffer/gel required.
- Filter-paper-free.
- Reusable sponges.

Highly Reproducible Results

- Fixed electrode spacing.
- Optimized pre-installed programs.
- High consistency across repeated runs.

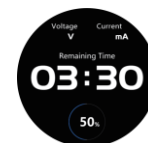
EZ BLOT Minimalist Operation, One-Touch Wet Transfer



① Assemble the Sandwich



② Rotate to Select Gel Concentration



③ Press to Start

Truly One-Touch Start Load sandwich

- Select gel concentration and press to start.

No Learning Curve

- Ready for beginners; Eliminates parameter errors; Consistent results of every single run.

No Optimization Needed

- Pre-optimized programs for all market available gels.

Easy Maintenance

- All-in-one design; Easy to wipe and clean; Easy to upgrade.

EZ BLOT Open Reagent Formulation Safe & Non-Toxic

Open Reagent Formulation

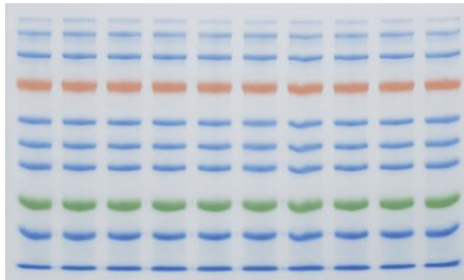
- Recipes provided for self-preparation.
- Minimizes experimental costs.
- Eliminates supply delays.

Non-Toxic, Safer Transfer Buffer

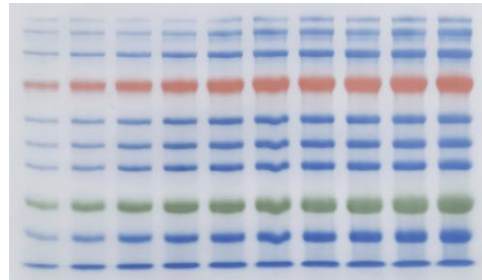
- Methanol-free option.
- Safe for laboratory personnel.
- Environmentally Friendly.

EZ BLOT Marker Transfer Results

Loading Volume: 3 μ L/well



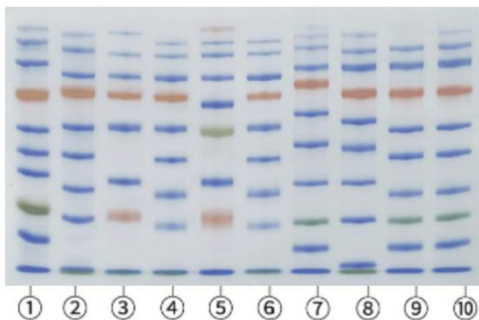
Loading Volume (Left to right): 1-10 μ L



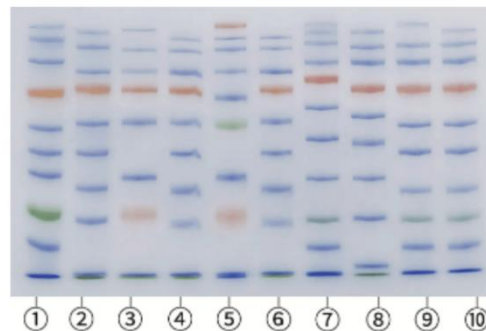
Membrane	Gel	Marker Range
NC Membrane (0.22 μ m)	10%, 1.0 mm, 10 wells	10-250 kDa

EZ BLOT Marker Transfer Results on Different Membranes

NC Membrane (0.22 μ m) Transfer Result



PVDF Membrane (0.2 μ m) Transfer Result

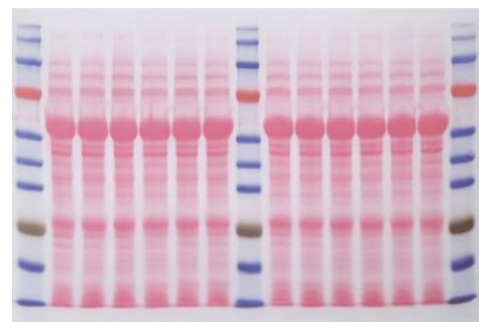
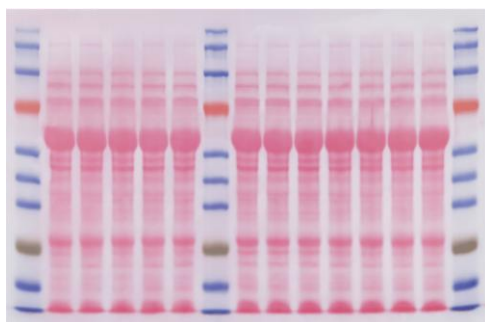


Marker	Brand A		Brand B		Brand C		Brand D		Brand E	
Lane	①	②	③	④	⑤	⑥	⑦	⑧	⑨	⑩
MW	10-250 kDa	10-180 kDa	10-250 kDa	10-180 kDa	6.5-270 kDa	10-180 kDa	10-245 kDa	8-180 kDa	10-250 kDa	10-180 kDa
Gel	10%, 1.0 mm, 10 wells									

EZ BLOT VS. Traditional Wet Transfer

EZ BLOT Result: Built-in program, 20 min

Traditional Wet Transfer Result: 300 mA, 60 min



Membrane	Gel	Marker
NC Membrane (0.22 μ m)	10%, 1.5 mm, 15 wells	10-250 kDa