

K Cadherin Rabbit Monoclonal Antibody

Catalog	Unit
TBS10405-100	100 μ L

Product Details

Description: K cadherin, encoded by the CDH6 gene, is a type II member of the cadherin superfamily that functions as a calcium-dependent cell–cell adhesion glycoprotein located at the cell membrane.

Synonyms: CAD6; CADH6_HUMAN; Cadherin 6; Cadherin 6 type 2; Cadherin 6 type 2 K cadherin (fetal kidney); Cadherin fetal kidney; Cadherin-6; Cadherin6; CDH 6; Cdh6; K-cadherin; KCAD; Kidney cadherin

Applications: WB, IHC-P, IF-Tissue

Host: Rabbit

Isotype: IgG

Species Reactivity: Human, Mouse, Rat

Concentration: 1 μ g/ μ l

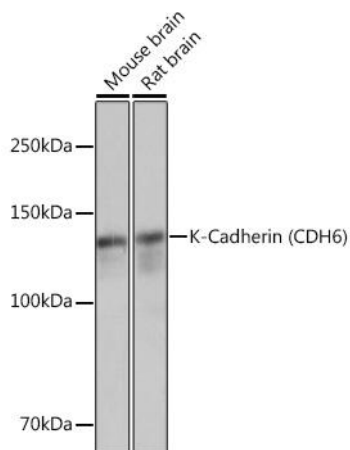
Purification: Protein A affinity purified.

Formulation: TBS (pH7.4), 0.05% BSA, 40% Glycerol. Preservative: 0.05% Sodium Azide.

Clonality: Monoclonal

Storage: Store at -20°C.

Applications



Western blot analysis of various lysates using K-Cadherin (CDH6) Rabbit Monoclonal Antibody at 1:3000 dilution.

For research use only.