

Catalog	Unit
TBS10397-0.5MG	0.5 mg
TBS10397-1MG	1 mg
TBS10397-5MG	5 mg

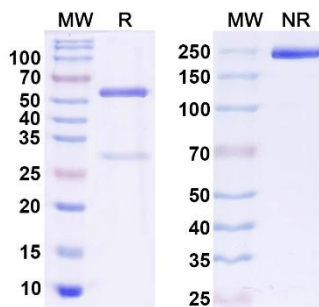
**Description**

Tribioscience in vivo Anti-Human AFP/Alpha-fetoprotein Monoclonal Antibody is a human monoclonal antibody specifically targeting Alpha-fetoprotein (AFP), also known as Alpha-1-fetoprotein, Alpha-fetoglobulin, or HPAFP, in human samples. It is validated for flow cytometry (FCM) and neutralization assays, enabling reliable analysis of AFP expression and function. AFP is a well-established tumor-associated antigen that is highly expressed in hepatocellular carcinoma, germ cell tumors, and certain gastric and pancreatic cancers, and is widely used as a diagnostic and prognostic biomarker. It is an ideal research tool for studying AFP-mediated tumor progression, immune modulation, and cancer biomarker development.

**Product Details**

<b>Applications:</b>	FCM, Neutralization
<b>Species reactivity:</b>	Human
<b>Host:</b>	Human
<b>Isotype:</b>	IgG1, kappa
<b>Target:</b>	Alpha-fetoprotein, Alpha-1-fetoprotein, Alpha-fetoglobulin, AFP, HPAFP.
<b>Uniprot:</b>	P02771
<b>Concentration:</b>	3 mg/ml
<b>Purity:</b>	>95%
<b>Formulation:</b>	Liquid
<b>Storage buffer:</b>	0.01M PBS, pH 7.4.
<b>Purification:</b>	Protein A/G purified from cell culture supernatant.
<b>Clonality:</b>	Monoclonal
<b>Storage:</b>	Store -20°C up to 12 months, and -80°C for long term. Avoid repeated freeze-thaw cycles.

**Data Image**

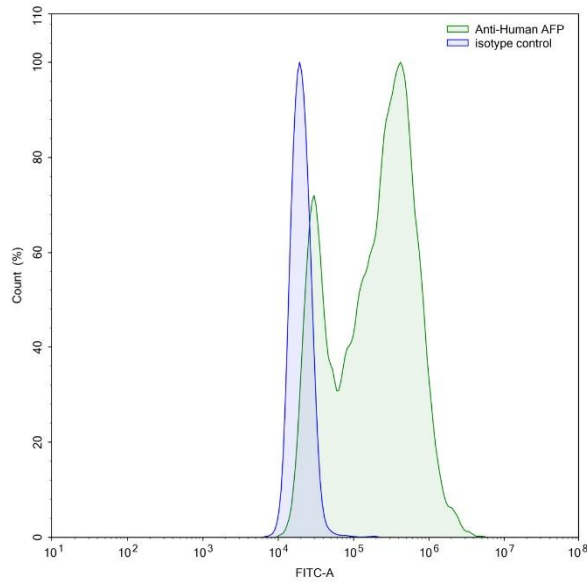


**Fig. 1. SDS-PAGE for InVivo Anti-Human AFP/Alpha-fetoprotein Antibody**

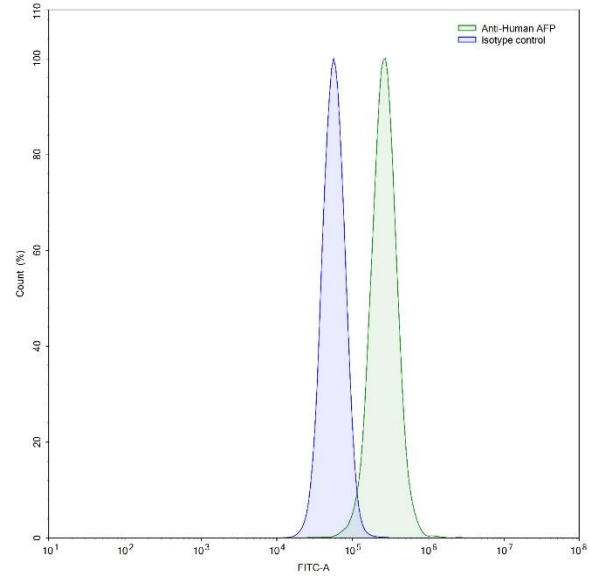
MW: Molecular Weight (kDa) Marker.

R: Reducing conditions.

NR: Non-Reducing conditions.



**Fig. 2. Flow-cytometry using anti-human AFP antibody.** AFP Transfected CHO cells were stained with an irrelevant antibody (Blue Histogram) or an anti-human AFP antibody monoclonal antibody (Green Histogram) at a concentration of 5 µg/ml for 30 mins at RT. After washing, bound antibody was detected using a FITC conjugated goat anti-human and cells analyzed on a NovoCyte Flow Cytometer.



**Fig. 3. Flow-cytometry using anti-human AFP antibody.** HepG2 cells were stained with an irrelevant antibody (Blue Histogram) or an anti-human AFP antibody monoclonal antibody (Green Histogram) at a concentration of 5 µg/ml for 30 mins at RT. After washing, bound antibody was detected using a FITC conjugated goat anti-human antibody and cells analyzed on a NovoCyte Flow Cytometer.

**For research use only.**