

Catalog	Unit
TBS10396-0.5MG	0.5 mg
TBS10396-1MG	1 mg
TBS10396-5MG	5 mg

Description

Tribioscience in vivo Anti-Human OPN/SPP1 Monoclonal Antibody is a high-purity antibody specifically targeting human osteopontin (OPN), also known as secreted phosphoprotein-1 (SPP1), a multifunctional cytokine involved in cell adhesion, immune regulation, inflammation, and extracellular matrix remodeling. This antibody is optimized for in vivo and functional studies and is widely used in research focused on tumor progression and metastasis, tumor microenvironment remodeling, immune cell activation, and bone biology. It is particularly relevant to studies of diseases such as solid tumors (including breast cancer, lung cancer, and hepatocellular carcinoma), autoimmune and inflammatory disorders, cardiovascular diseases, fibrosis, and bone-related diseases such as osteoporosis and rheumatoid arthritis, where aberrant OPN/SPP1 expression plays a critical pathogenic role.

Product Details

Applications:	ELISA, FCM, Neutralization
Species reactivity:	Human
Host:	Human
Isotype:	IgG1, kappa
Target:	Osteopontin, Bone sialoprotein 1, Nephropontin, Secreted phosphoprotein 1, SPP-1, Urinary stone protein, Uropontin, SPP1, BNSP, OPN, PSEC0156.
Uniprot:	P10451
Concentration:	3 mg/ml
Purity:	>95%
Formulation:	Liquid
Storage buffer:	0.01M PBS, pH 7.4.
Purification:	Protein A/G purified from cell culture supernatant.
Clonality:	Monoclonal
Storage:	Store -20°C up to 12 months, and -80°C for long term. Avoid repeated freeze-thaw cycles.

Data Image

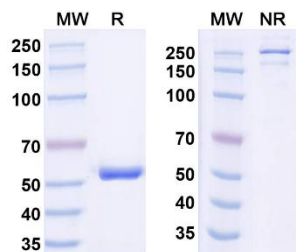


Fig. 1. SDS-PAGE for InVivo Anti-Human OPN/SPP1.
 MW: Molecular Weight (kDa) Marker.
 R: Reducing conditions.
 NR: Non-Reducing conditions.

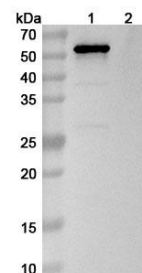


Fig. 2. Western blot analysis was performed using anti-OPN/SPP1 monoclonal antibody at 1ug/mL on various samples.
 Lane 1: recombinant human OPN/SPP1
 Lane 2: negative control

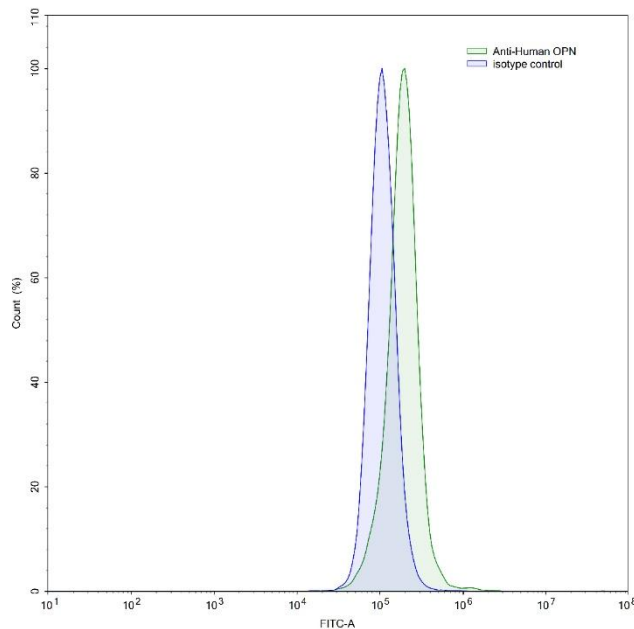


Fig. 3. Flow-cytometry using anti-human OPN antibody.

HepG2 cells were stained with an irrelevant antibody (Blue Histogram) or an anti-human OPN antibody monoclonal antibody (Green Histogram) at a concentration of 5 $\mu\text{g/ml}$ for 30 mins at RT. After washing, bound antibody was detected using a FITC conjugated goat anti-human antibody and cells analyzed on a NovoCyte Flow Cytometer.

For research use only.