

Catalog	Unit
TBS10395-0.5MG	0.5 mg
TBS10395-1MG	1 mg
TBS10395-5MG	5 mg

Description

Tribioscience in vivo Anti-Human CD228/MELTF is a monoclonal antibody specifically targeting human CD228 (Melanotransferrin, MAP97, MFI2, MELTF) and is validated for ELISA, flow cytometry (FCM), and neutralization assays. It is a valuable tool for studying CD228-mediated signaling, tumor progression, and immune regulation, particularly in melanoma and other cancers, as well as in research on iron metabolism and pathological immune responses. This human IgG1 monoclonal antibody offers high specificity and broad applicability, making it a reliable reagent for dissecting the biological functions of CD228.

Product Details

Applications:	ELISA, FCM, Neutralization
Species reactivity:	Human
Host:	Human
Isotype:	IgG1
Target:	CD228, Melanotransferrin, Melanoma-associated antigen p97, MAP97, MFI2, MELTF
Uniprot:	P08582
Concentration:	3 mg/ml
Purity:	>95%
Formulation:	Liquid
Storage buffer:	0.01M PBS, pH 7.4.
Purification:	Protein A/G purified from cell culture supernatant.
Clonality:	Monoclonal
Storage:	Store -20°C up to 12 months, and -80°C for long term. Avoid repeated freeze-thaw cycles.

Data Image

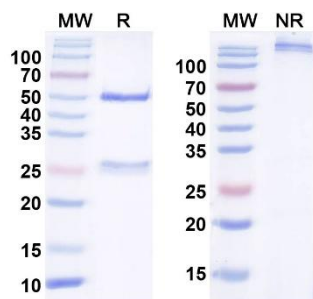


Fig. 1. SDS-PAGE for InVivo Anti-Human CD228/MELTF.

MW: Molecular Weight (kDa) Marker.
 R: Reducing conditions.
 NR: Non-Reducing conditions.

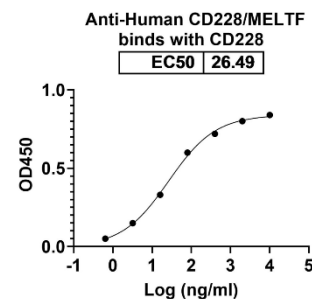


Fig. 2. Detects CD228/MELTF in indirect ELISAs.

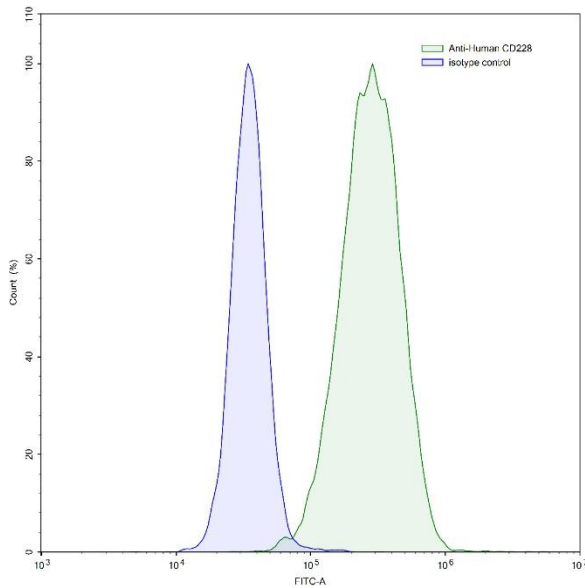


Fig. 3. Flow-cytometry using anti-human CD228 antibody. A431 cells were stained with an irrelevant antibody (Blue Histogram) or an anti-human CD228 antibody monoclonal antibody (Green Histogram) at a concentration of 5 µg/ml for 30 mins at RT. After washing, bound antibody was detected using a FITC conjugated goat anti-human antibody and cells analyzed on a NovoCyte Flow Cytometer.

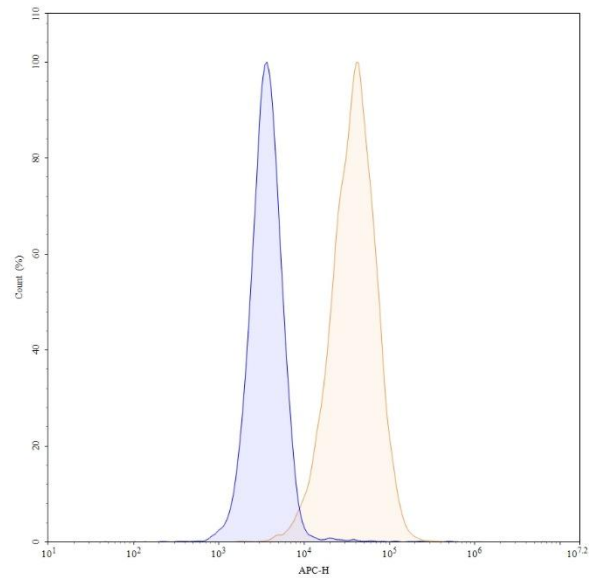


Fig. 4. Flow-cytometry using APC anti-human CD228 antibody.

A431 cells were stained with an irrelevant antibody (Blue Histogram) or an APC anti-human CD228 monoclonal antibody (Yellow Histogram) at a concentration of 5 µg/ml for 30 mins at RT. After washing, cells analyzed on a NovoCyte Flow Cytometer.

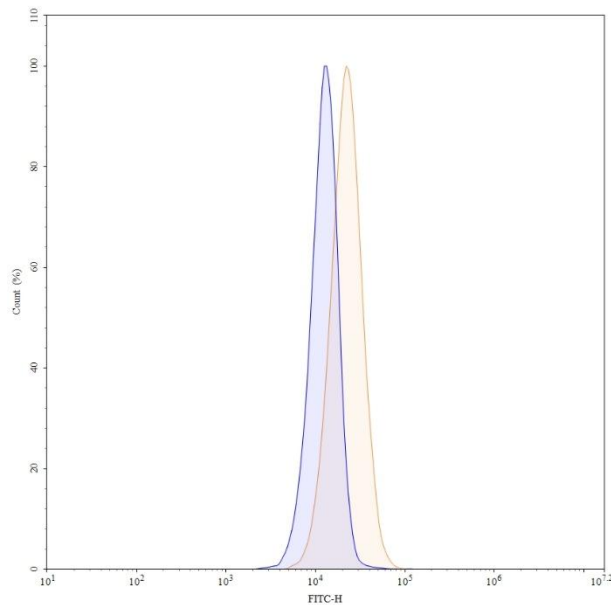


Fig. 5. Flow-cytometry using FITC anti-human CD228 antibody.

A431 cells were stained with an irrelevant antibody (Blue Histogram) or an FITC anti-human CD228 monoclonal antibody (Yellow Histogram) at a concentration of 5 µg/ml for 30 mins at RT. After washing, cells analyzed on a NovoCyte Flow Cytometer.

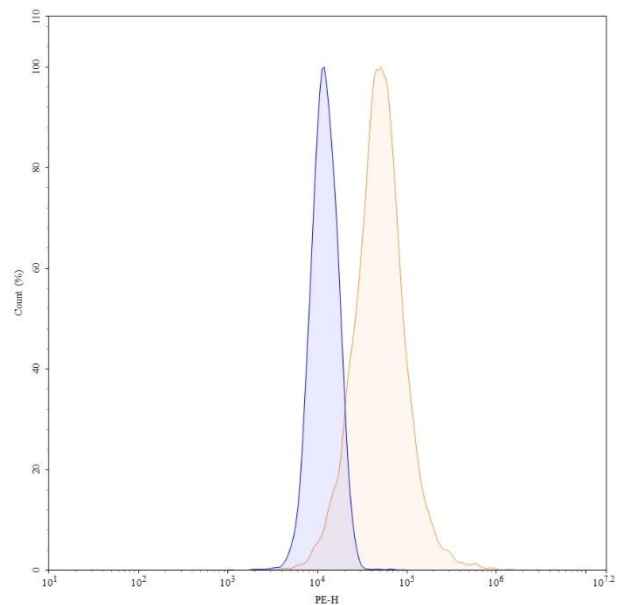


Fig. 6. Flow-cytometry using PE anti-human CD228 antibody.

A431 cells were stained with an irrelevant antibody (Blue Histogram) or an PE anti-human CD228 monoclonal antibody (Yellow Histogram) at a concentration of 5 µg/ml for 30 mins at RT. After washing, and cells analyzed on a NovoCyte Flow Cytometer.

For research use only.