

Catalog	Unit
TBS10394-0.5MG	0.5 mg
TBS10394-1MG	1 mg
TBS10394-5MG	5 mg

Description

Tribioscience in vivo Anti-Human TGFB2 antibody is a human monoclonal antibody that specifically recognizes TGF-beta-2, including Glioblastoma-derived T-cell suppressor factor (G-TSF), LAP, Cetermin, and the TGF-beta-2 proprotein. It is suitable for ELISA, flow cytometry, and functional neutralization assays, enabling both detection and inhibition of TGF-beta-2 activity. TGF-beta-2 is a key immunosuppressive cytokine involved in tumor progression, immune evasion, and fibrotic processes, making this antibody an essential tool for studying cancer immunology, glioblastoma biology, and therapeutic modulation of TGF-beta signaling.

Product Details

Applications:	ELISA, FCM, Neutralization
Species reactivity:	Human
Host:	Human
Isotype:	IgG4
Target:	Glioblastoma-derived T-cell suppressor factor, TGF-beta-2, LAP, G-TSF, TGFB2, Cetermin, Transforming growth factor beta-2 proprotein.
Uniprot:	P61812
Concentration:	3 mg/ml
Purity:	>95%
Formulation:	Liquid
Storage buffer:	0.01M PBS, pH 7.4.
Purification:	Protein A/G purified from cell culture supernatant.
Clonality:	Monoclonal
Storage:	Store -20°C up to 12 months, and -80°C for long term. Avoid repeated freeze-thaw cycles.

Data Image

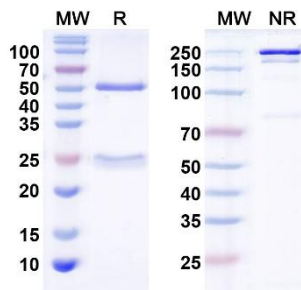


Fig. 1. SDS-PAGE for InVivo Anti-Human TGFB2/TGF-beta-2 Antibody

MW: Molecular Weight (kDa) Marker.
 R: Reducing conditions.
 NR: Non-Reducing conditions.

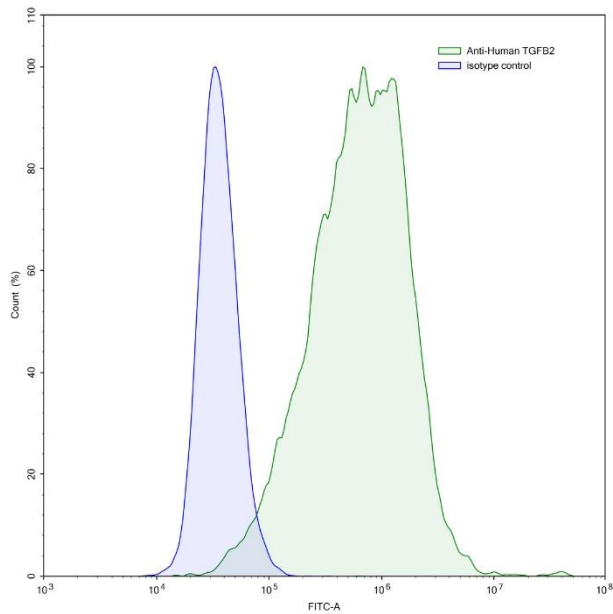


Fig. 2 Flow-cytometry using anti-human TGFB2 antibody. PC-3 cells were stained with an irrelevant antibody (Blue Histogram) or an anti-human TGFB2 antibody monoclonal antibody (Green Histogram) at a concentration of 5 µg/ml for 30 mins at RT. After washing, bound antibody was detected using a FITC conjugated goat anti-human antibody and cells analyzed on a NovoCyte Flow Cytometer.

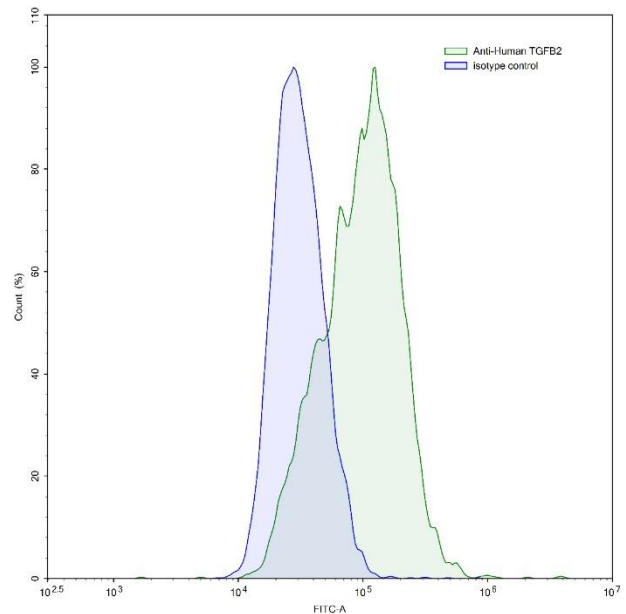


Fig. 3 Flow-cytometry using anti-human TGFB2 antibody. HUVEC cells were stained with an irrelevant antibody (Blue Histogram) or an anti-human TGFB2 antibody monoclonal antibody (Green Histogram) at a concentration of 5 µg/ml for 30 mins at RT. After washing, bound antibody was detected using a FITC conjugated goat anti-human antibody and cells analyzed on a NovoCyte Flow Cytometer.

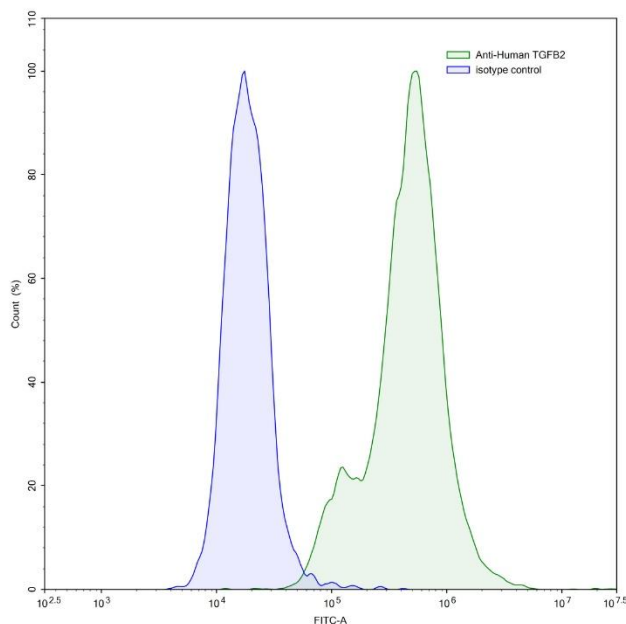


Fig. 4 Flow-cytometry using anti-human TGFB2 antibody. TGFB2 Transfected CHO cells were stained with an irrelevant antibody (Blue Histogram) or an anti-human TGFB2 antibody monoclonal antibody (Green Histogram) at a concentration of 5 µg/ml for 30 mins at RT. After washing, bound antibody was detected using a FITC conjugated goat anti-human antibody and cells analysed on a NovoCyte Flow Cytometer.

For research use only.