

Catalog	Unit
TBS10384-0.5MG	0.5 mg
TBS10384-1MG	1 mg
TBS10384-5MG	5 mg

Description

Tribioscience InVivo Anti-Human STEAP1 Antibody (IgG1 κ) is a highly purified (>95%) monoclonal antibody targeting STEAP1 (Six-Transmembrane Epithelial Antigen of Prostate 1), a cell surface Metallo reductase overexpressed in multiple cancers, including prostate, bladder, colon, ovarian, and breast cancers, as well as Ewing’s sarcoma. Produced in human host cells and purified via Protein A/G from culture supernatants, this antibody is reactive with human cells and validated for ELISA, flow cytometry (FCM), and neutralization assays. Its high specificity and functional versatility make it a valuable tool for investigating STEAP1 expression, cancer progression, and therapeutic targeting, supporting both basic research and preclinical oncology studies.

Product Details

Applications:	ELISA, FCM, Neutralization
Species reactivity:	Human
Host:	Human
Isotype:	IgG1, kappa
Target:	PRSS24, STEAP1, STEAP, Metallo reductase STEAP1, Six-transmembrane epithelial antigen of prostate 1.
Uniprot:	Q9UHE8
Concentration:	3 mg/ml
Purity:	>95%
Formulation:	Liquid
Storage buffer:	0.01M PBS, pH 7.4.
Purification:	Protein A/G purified from cell culture supernatant.
Clonality:	Monoclonal
Storage:	Store -20°C up to 12 months, and -80°C for long term. Avoid repeated freeze-thaw cycles.

Data Image

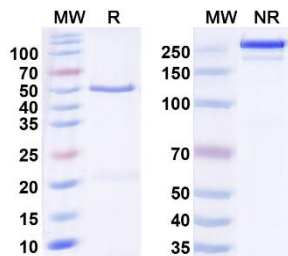


Fig. 1. SDS-PAGE for InVivoMab Anti-Human STEAP1 Antibody.

MW: Molecular Weight (kDa) Marker.

R: Reducing conditions.

NR: Non-Reducing conditions.

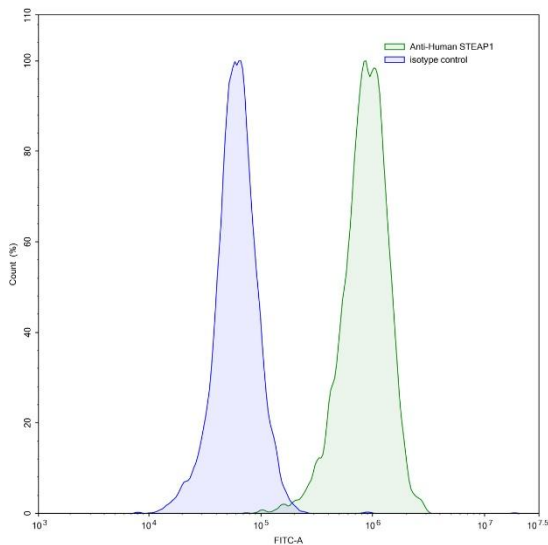


Fig. 2. Flow-cytometry using anti-human STEAP1 antibody.

LNCaP cells were stained with an irrelevant antibody (Blue Histogram) or an anti-human STEAP1 antibody monoclonal antibody (Green Histogram) at a concentration of 5 $\mu\text{g}/\text{ml}$ for 30 mins at RT. After washing, bound antibody was detected using a FITC conjugated goat anti-human antibody and cells analyzed on a NovoCyte Flow Cytometer.

For research use only.