

Catalog	Unit
TBS10378-0.5MG	0.5 mg
TBS10378-1MG	1 mg
TBS10378-5MG	5 mg

Description

Tribio in vivo Anti-Human GREM1/DAND2 Antibody is a high-purity human monoclonal antibody that specifically targets Gremlin-1 (GREM1/DAND2), a secreted cysteine-knot protein and BMP antagonist. GREM1 modulates BMP/TGF-β signaling, playing essential roles in embryonic development, organogenesis, and tissue homeostasis. Aberrant GREM1 expression has been linked to colorectal cancer (including hereditary mixed polyposis syndrome), other solid tumors, fibrosis, osteoarthritis, and intervertebral disc degeneration, highlighting its relevance in cancer, fibrosis, and tissue remodeling research. This antibody is suitable for ELISA, flow cytometry, and neutralization assays in research applications.

Product Details

Applications:	ELISA, FCM, Neutralization
Species reactivity:	Human
Host:	Human
Isotype:	IgG4, kappa
Target:	Cysteine knot superfamily 1, BMP antagonist 1, CKTSF1B1, Down-regulated in Mos-transformed cells protein, Increased in high glucose protein 2, IHG-2, DRM, GREM1, Gremlin-1, Cell proliferation-inducing gene 2 protein, DAN domain family member 2, DAND2.
Uniprot:	O60565
Concentration:	3 mg/ml
Purity:	>95%
Formulation:	Liquid
Storage buffer:	0.01M PBS, pH 7.4.
Purification:	Protein A/G purified from cell culture supernatant.
Clonality:	Monoclonal
Storage:	Store -20°C up to 12 months, and -80°C for long term. Avoid repeated freeze-thaw cycles.

Data Image

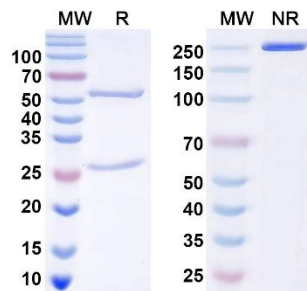


Fig. 1. SDS-PAGE for InVivoMAb Anti-Human GREM1/DAND2 Antibody

MW: Molecular Weight (kDa) Marker.

R: Reducing conditions.

NR: Non-Reducing conditions.

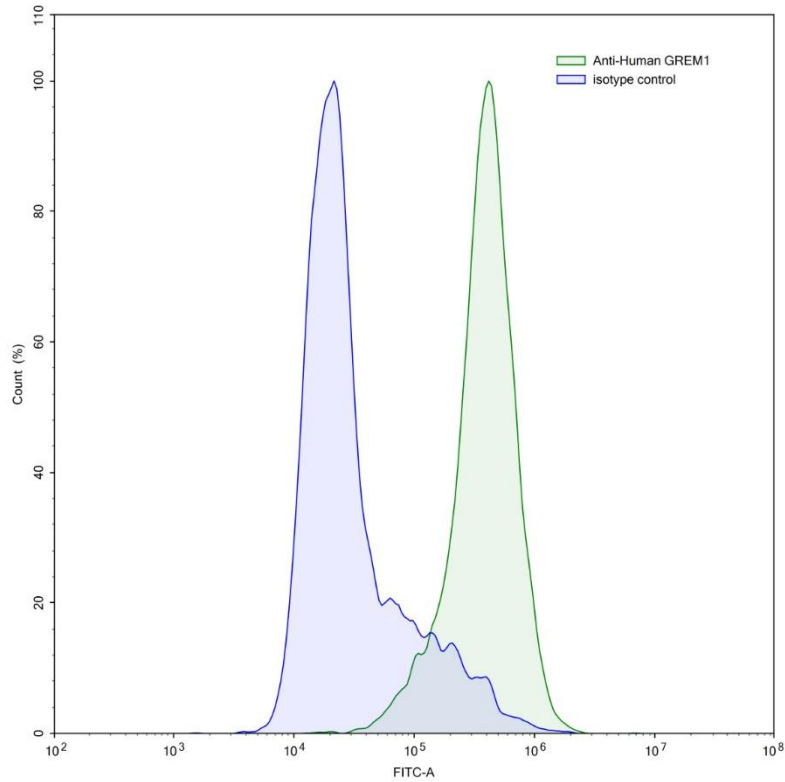


Fig. 2. Flow-cytometry using anti-human GREM1 antibody.

GREM1 Transfected CHO cells were stained with an irrelevant antibody (Blue Histogram) or an anti-human GREM1 antibody monoclonal antibody (Green Histogram) at a concentration of 5 µg/ml for 30 mins at RT. After washing, bound antibody was detected using a FITC conjugated goat anti-human antibody and cells analyzed on a NovoCyte Flow Cytometer.

For research use only.