

Catalog	Unit
TBS10348-0.5MG	0.5 mg
TBS10348-1MG	1 mg
TBS10348-5MG	5 mg

**Description**

InVivoMAb Anti-Human NGF/Beta-NGF antibody is a monoclonal antibody that specifically targets human nerve growth factor (NGF), also known as beta-NGF. NGF is a key neurotrophin involved in the development, survival, and sensitization of sensory neurons, as well as in pain signaling and neuroinflammatory processes. By binding to NGF, this antibody neutralizes NGF activity and prevents its interaction with NGF receptors.

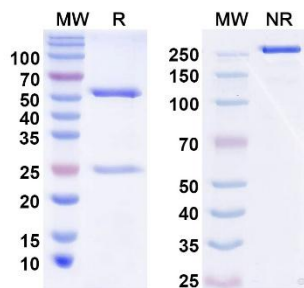
**Synonyms**

Anti-Human NGF antibody, Anti-NGF monoclonal antibody, Anti-β-NGF antibody, NGF neutralizing antibody, NGF blocking antibody, Human NGF mAb, Monoclonal anti-nerve growth factor antibody, NGF functional blocking antibody, NGF inhibitory antibody.

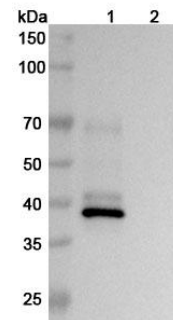
**Product Details**

- Applications:** ELISA, FCM, Neutralization
- Species reactivity:** Human
- Host:** Human
- Isotype:** IgG2, kappa
- Target:** Beta-nerve growth factor, NGFB, Beta-NGF, NGF
- Uniprot:** P01138
- Concentration:** 3 mg/ml
- Purity:** >95%
- Formulation:** Liquid
- Storage buffer:** 0.01M PBS, pH 7.4.
- Purification:** Protein A/G purified from cell culture supernatant.
- Clonality:** Monoclonal
- Storage:** Store -20°C up to 12 months, and -80°C for long term. Avoid repeated freeze-thaw cycles.

**Data Image**



**Fig. 1. SDS-PAGE for InVivoMAb Anti-Human NGF/Beta-NGF**  
 MW: Molecular Weight (kDa) Marker.  
 R: Reducing conditions.  
 NR: Non-Reducing conditions.



**Fig. 2. Western blot analysis was performed using anti-NGF monoclonal antibody at 1ug/mL on various samples.**  
 Lane 1: human NGF; Lane 2: negative control

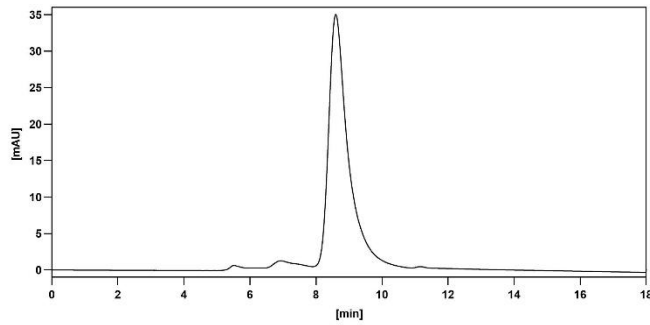


Fig. 3. SEC-HPLC detection for InVivoMAb Anti-Human NGF/Beta-NGF

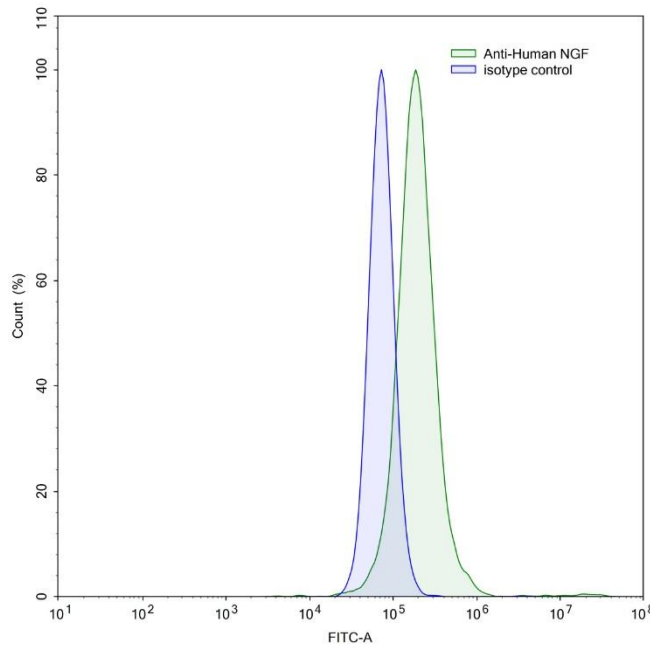


Fig. 4. Flow-cytometry using anti-human NGF antibody. NCI-H460 cells were stained with an irrelevant antibody (Blue Histogram) or an anti-human NGF antibody monoclonal antibody (Green Histogram) at a concentration of 5 µg/ml for 30 mins at RT. After washing, bound antibody was detected using a FITC conjugated goat anti-human antibody and cells analysed on a NovoCyte Flow Cytometer.

For research use only.