

Catalog	Unit
TBS10347-0.5MG	0.5 mg
TBS10347-1MG	1 mg
TBS10347-5MG	5 mg

**Description**

InVivoMAb Anti-Human IL-6 antibody is a monoclonal antibody that specifically targets human interleukin-6 (IL-6), a key cytokine involved in inflammation and immune regulation. By blocking IL-6 signaling, this antibody is widely used in research to investigate inflammatory pathways and to explore the role of IL-6 in autoimmune and chronic inflammatory diseases.

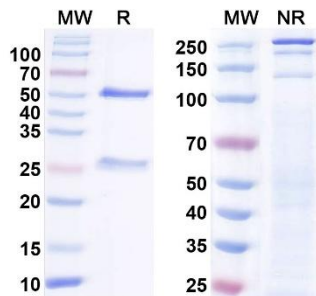
**Synonyms**

Anti-Human IL-6 monoclonal antibody, Anti-IL-6 antibody, Human IL-6 neutralizing antibody, IL-6 blocking antibody, IL-6-specific monoclonal antibody.

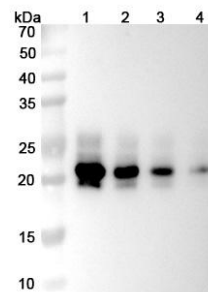
**Product Details**

- Applications:** ELISA, FCM, Neutralization
- Species reactivity:** Human
- Host:** Human
- Isotype:** IgG1, kappa
- Target:** Hybridoma growth factor, BSF-2, IFN-beta-2, CDF, IL6, Interleukin-6, IL-6, B-cell stimulatory factor 2, Interferon beta-2, IFNB2, CTL differentiation factor.
- Uniprot:** P05231
- Concentration:** 3 mg/ml
- Purity:** >95%
- Formulation:** Liquid
- Storage buffer:** 0.01M PBS, pH 7.4.
- Purification:** Protein A/G purified from cell culture supernatant.
- Clonality:** Monoclonal
- Storage:** Store -20°C up to 12 months, and -80°C for long term. Avoid repeated freeze-thaw cycles.

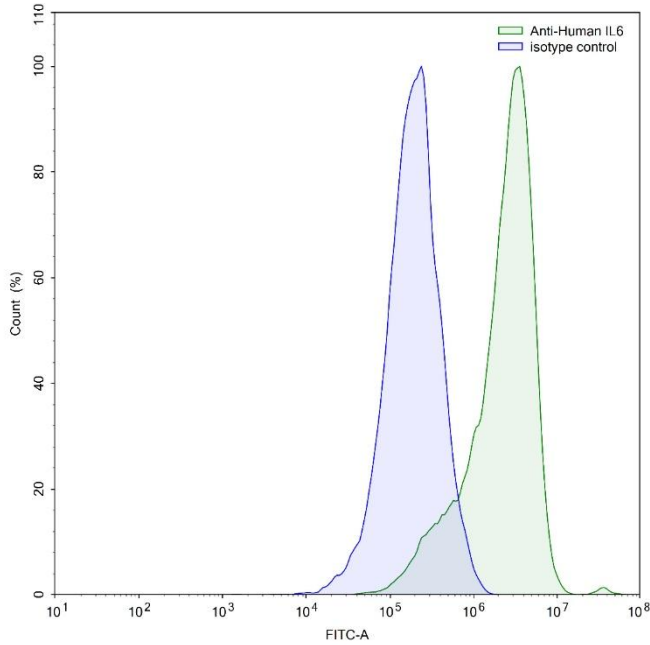
**Data Image**



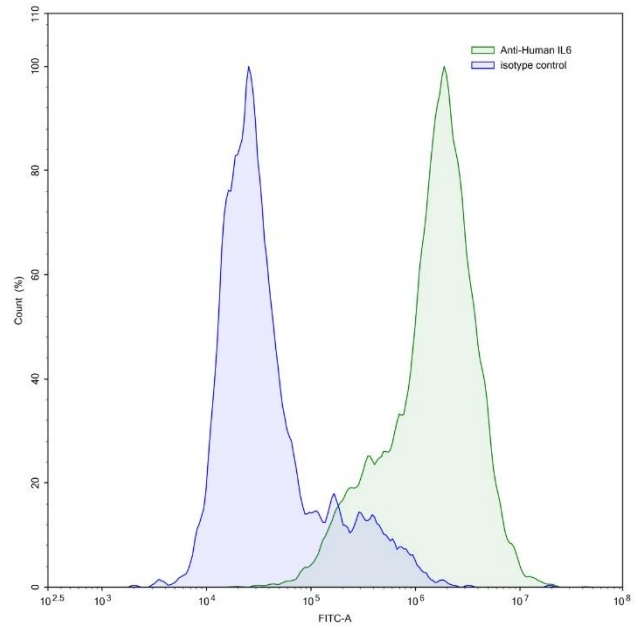
**Fig. 1. SDS-PAGE for InVivoMAb Anti-Human IL6.**  
 MW: Molecular Weight (kDa) Marker.  
 R: Reducing conditions.  
 NR: Non-Reducing conditions.



**Fig. 2. Western blot analysis was performed using anti-IL6 monoclonal antibody at 1µg/ml on various samples.**  
 Lane 1: recombinant human IL6, 50ng.  
 Lane 2: recombinant human IL6, 30ng.  
 Lane 3: recombinant human IL6, 20ng.  
 Lane 4: recombinant human IL6, 10ng.



**Fig. 3. Flow-cytometry using anti-human IL6 antibody.** LPS treated THP-1 cells were stained with an irrelevant antibody (Blue Histogram) or an anti-human IL6 antibody monoclonal antibody (Green Histogram) at a concentration of 5 µg/ml for 30 mins at RT. After washing, bound antibody was detected using a FITC conjugated goat anti-human antibody and cells analyzed on a NovoCyte Flow Cytometer.



**Fig. 4. Flow-cytometry using anti-human IL6 antibody.** IL6 Transfected CHO cells were stained with an irrelevant antibody (Blue Histogram) or an anti-human IL6 antibody monoclonal antibody (Green Histogram) at a concentration of 5 µg/ml for 30 mins at RT. After washing, bound antibody was detected using a FITC conjugated goat anti-human antibody and cells analyzed on a NovoCyte Flow Cytometer.

**For research use only.**