

Catalog	Unit
TBS10346-0.5MG	0.5 mg
TBS10346-1MG	1 mg
TBS10346-5MG	5 mg

Description

InVivoMAb Anti-Human IL1B/IL1F2 antibody is a monoclonal antibody designed to specifically neutralize human interleukin-1 beta (IL-1 β), also known as IL-1F2, a key pro-inflammatory cytokine involved in innate immune responses. By blocking IL-1 β signaling, this antibody effectively attenuates downstream inflammatory pathways. It is widely used in preclinical and translational research to investigate the role of IL-1 β in autoinflammatory and inflammatory diseases, including cryopyrin-associated periodic syndromes (CAPS), tumor necrosis factor receptor-associated periodic syndrome (TRAPS), familial Mediterranean fever (FMF), Still’s disease, and gout flares.

Synonyms

Anti-Human IL-1 β monoclonal antibody, Anti-IL1B antibody, Anti-IL-1 beta antibody, IL-1 β neutralizing antibody, IL-1F2 antibody, Human IL-1 β blocking antibody, Anti-IL-1 β mAb, functional grade IL-1 β antibody, neutralizing anti-IL-1 β antibody.

Product Details

- Applications:** ELISA, FCM, Neutralization.
- Species reactivity:** Human
- Host:** Human
- Isotype:** IgG1, kappa
- Target:** Interleukin-1 beta, IL1B, Catabolin, IL1F2, IL-1 beta, IL-1 β .
- Uniprot:** P01584
- Concentration:** 3 mg/ml
- Purity:** >95%
- Formulation:** Liquid
- Storage buffer:** 0.01M PBS, pH 7.4.
- Purification:** Protein A/G purified from cell culture supernatant.
- Clonality:** Monoclonal
- Storage:** Store -20°C up to 12 months, and -80°C for long term. Avoid repeated freeze-thaw cycles.

Data Image

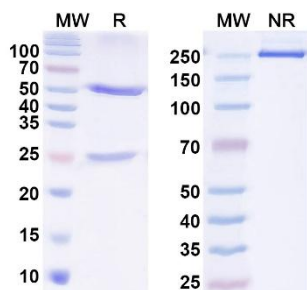


Fig. 1. SDS-PAGE for InVivoMAb Anti-Human IL1B/IL1F2 antibody
 MW: Molecular Weight (kDa) Marker.
 R: Reducing conditions.

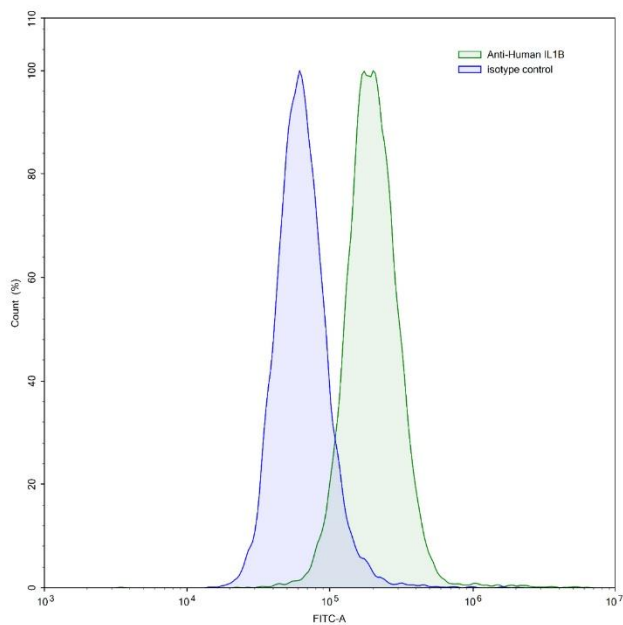


Fig. 2. Flow-cytometry using anti-human IL1B antibody. HeLa cells were stained with an irrelevant antibody (Blue Histogram) or an anti-human IL1B antibody monoclonal antibody (Green Histogram) at a concentration of 5 µg/ml for 30 mins at RT. After washing, bound antibody was detected using a FITC conjugated goat anti-human antibody and cells analysed on a NovoCyte Flow Cytometer.

For research use only.