

Catalog	Unit
TBS10329-0.5MG	0.5 mg
TBS10329-1MG	1 mg
TBS10329-5MG	5 mg

Description

InVivoMAb Anti-Human C-C Motif Chemokine Ligand 2 (CCL2) antibody is a human IgG1 monoclonal antibody that specifically targets CCL2. It reduces tumor-associated macrophage infiltration, slows tumor progression, and enhances the efficacy of chemotherapy.

Synonyms

Anti-Human CCL2 antibody, Anti-Human Monocyte Chemoattractant Protein-1 antibody, Anti-Human MCP-1 antibody.

Product Details

Applications:	ELISA, FCM, Neutralization
Species reactivity:	Human
Host:	Human
Isotype:	IgG1, kappa
Target:	HC11, MCP-1, MCP1, Monocyte chemotactic protein 1, Monocyte chemotactic and activating factor, Small-inducible cytokine A2, SCYA2, MCAF, Monocyte secretory protein JE, C-C motif chemokine 2, Monocyte chemoattractant protein 1, CCL2.
Uniprot:	P13500
Concentration:	3 mg/ml
Purity:	>95%
Formulation:	Liquid
Storage buffer:	0.01M PBS, pH 7.4.
Purification:	Protein A/G purified from cell culture supernatant.
Clonality:	Monoclonal
Storage:	Store -20°C up to 12 months, and -80°C for long term. Avoid repeated freeze-thaw cycles.

Data Image

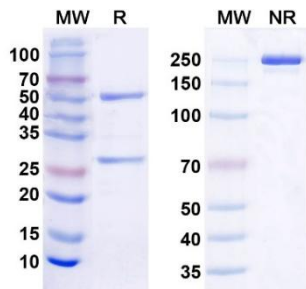
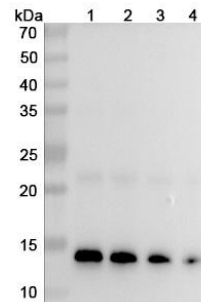


Fig. 1. SDS-PAGE analysis of Anti-Human CCL2.

MW: Molecular Weight (kDa) Marker
 R: Reducing conditions
 NR: Non-Reducing conditions



Lane 1: recombinant human CCL2/MCP-1 50ng
Lane 2: recombinant human CCL2/MCP-1 30ng
Lane 3: recombinant human CCL2/MCP-1 20ng
Lane 4: recombinant human CCL2/MCP-1 10ng

Fig. 2. Western blot analysis was performed using anti-CCL2 monoclonal antibody at 1µg/ml on various samples.

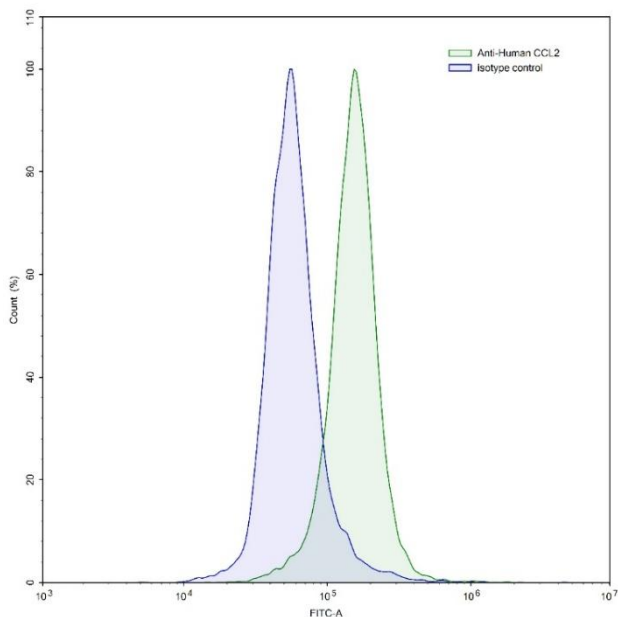


Fig. 3. Flow-cytometry using anti-human CCL2 antibody. Human peripheral blood lymphocytes were stained with an irrelevant antibody (Blue Histogram) or an anti-human CCL2 antibody monoclonal antibody (Green Histogram) at a concentration of 5 µg/ml for 30 mins at RT. After washing, bound antibody was detected using a FITC conjugated goat anti-human antibody and cells analyzed on a NovoCyte Flow Cytometer.

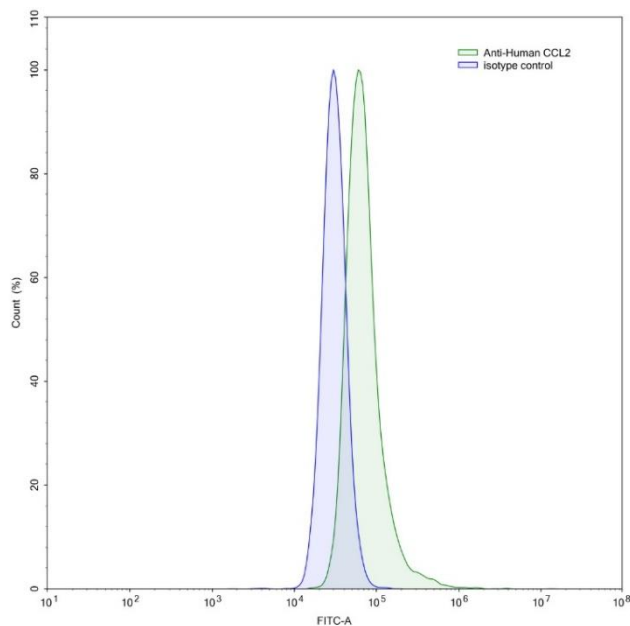


Fig. 4. Flow-cytometry using anti-human CCL2 antibody. A549 cells were stained with an irrelevant antibody (Blue Histogram) or an anti-human CCL2 antibody monoclonal antibody (Green Histogram) at a concentration of 5 µg/ml for 30 mins at RT. After washing, bound antibody was detected using a FITC conjugated goat anti-human antibody and cells analyzed on a NovoCyte Flow Cytometer.

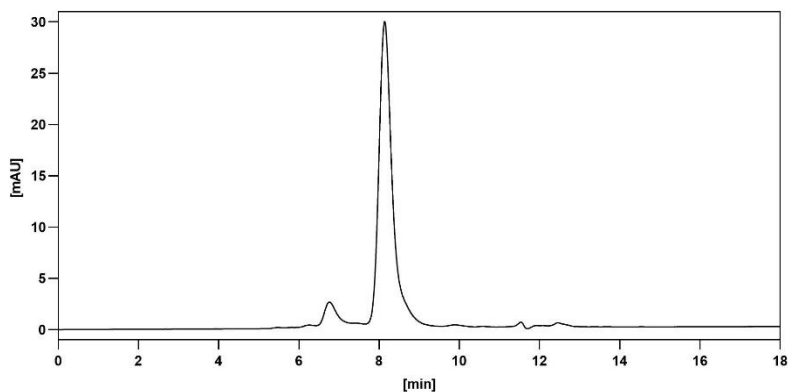


Fig. 5. SEC-HPLC detection for InVivoMAb Anti-Human CCL2.

For research use only.