

Catalog	Unit
TBS10313-0.5MG	0.5 mg
TBS10313-1MG	1 mg
TBS10313-5MG	5 mg

Description

InVivoMab Anti-Human Amyloid Precursor Protein (APP) antibody is a monoclonal antibody that specifically targets soluble A β protofibrils, a highly toxic aggregated species implicated in Alzheimer's disease. By forming antibody–A β complexes, it enhances the clearance of protofibrils and prevents their intracellular accumulation in astrocytes, which are known to store rather than degrade these aggregates. Through the reduction of protofibril burden, it also protects neurons from A β -induced cell death, demonstrating its potential to mitigate secondary neurotoxicity mediated by astrocytes.

Synonyms

Amyloid-beta precursor protein antibody, A β Antibody APP antibody.

Product Details

Applications:	ELISA, Neutralization
Species reactivity:	Human
Host:	Mouse
Isotype:	IgG2a, kappa
Target:	Amyloid-beta precursor protein, APP, ABPP, APPI, Alzheimer disease amyloid A4 protein homolog, Alzheimer disease amyloid protein, Amyloid precursor protein, Amyloid-beta (A4) precursor protein, Amyloid-beta A4 protein, Cerebral vascular amyloid peptide, CVAP, PreA4, Protease nexin-II, PN-II, N-APP, Soluble APP-alpha, S-APP-alpha, Soluble APP-beta, S-APP-beta, C99, Beta-secretase C-terminal fragment, Beta-CTF, Amyloid-beta protein 42, Abeta42, Beta-APP42, Amyloid-beta protein 40, Abeta40, Beta-APP40, C83, Alpha-secretase C-terminal fragment, Alpha-CTF, P3(42), P3(40), C80, Gamma-secretase C-terminal fragment 59, Amyloid intracellular domain 59, AICD-59, AID(59), Gamma-CTF(59), Gamma-secretase C-terminal fragment 57, Amyloid intracellular domain 57, AICD-57, AID(57), Gamma-CTF(57), Gamma-secretase C-terminal fragment 50, Amyloid intracellular domain 50, AICD-50, AID(50), Gamma-CTF(50), C31, APP, A4, AD1.
Uniprot:	P05067
Concentration:	3 mg/ml
Purity:	>95% as determined by SDS-PAGE
Formulation:	Liquid
Storage buffer:	0.01M PBS, pH 7.4
Purification:	Protein A/G purified from cell culture supernatant
Clonality:	Monoclonal
Storage:	Avoid repeated freeze-thaw cycles. Store at -20°C up to 12 months, -80°C for long term

Data Image

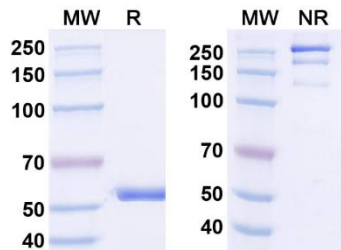


Fig. 1. SDS-PAGE analysis of Amyloid beta Antibody

MW: Molecular Weight (kDa) Marker

R: Reducing conditions

NR: Non-Reducing conditions

For research use only.