

1kb Plus Opti-DNA Marker

Catalog	Unit
TBS6117	500 μ l

Description

PCR products and double-stranded DNA were digested with appropriate restriction enzymes to completion to yield 14 bands, ranging from 250 pb – 25 kb, for molecular weight standards in agarose gel electrophoresis. The 1,000 and 3,000 base pair bands have increased intensity to serve as quick reference points. Approximated mass of each DNA band is provided (for a loading size of 5 μ l of the DNA ladder) for approximating the mass of DNA in comparably intense DNA samples of similar size. Total DNA concentration for all bands combined is 103.2ng/ μ l.

Component

Product	Unit
1kb Plus Opti-DNA Marker	500 μ l/100 loads

Specifications

Number of Bands: 14

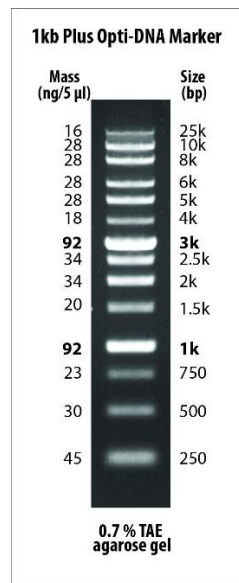
DNA Range: 250 bp - 25 kb

Suggested Load: Mix gently by pipetting up and down a few times, then directly load 5 μ l into the well of the gel.

Concentration: 104 μ g/ml

Application: For approximating DNA size and amount on agarose gels.

Storage Condition: Store at 4°C for up to 3 months or -20°C for up to 24 months.



For research use only