

Anti-Mouse IGF-1 Monoclonal Antibody

Catalog	Unit
TBS10303-0.2MG	0.2 mg
TBS10303-0.5MG	0.5 mg
TBS10303-1MG	1 mg
TBS10303-5MG	5 mg

Product Details

Description: Insulin-like growth factor 1 (IGF-1) is a polypeptide growth factor structurally and functionally related to insulin but with significantly greater growth-promoting activity. It is expressed in various tissues, particularly in muscle, bone, and cartilage, where it plays a vital role in stimulating cell proliferation, differentiation, migration, and survival.

Synonyms: Insulin-like Growth Factor I; Insulin-like Growth Factor 1; IBP1; IGF 1; IGF I; IGF-1; IGF IA; IGF IB; IGF1; IGFI; IGFI A; Insulin like growth factor 1; Insulin like growth factor IA; Insulin like growth factor IB; Mechano growth factor; MGF; Somatomeidia C; Somatomedin C; Nonsuppressible insulin-like activity I (NSILA-I)

Applications:

- In vivo blocking of IGF-1
- In vitro of IGF-1
- ELISA

Species reactivity: Mouse

Host: Human

Isotype: IgG1

Purity: >95% as determined by SDS-PAGE

Formulation: Liquid

Storage buffer: 0.01M PBS, pH 7.4

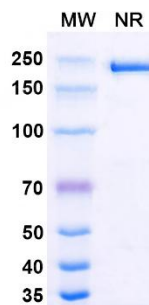
Purification: Protein A/G purified from cell culture supernatant.

Clonality: Monoclonal

Storage: Store at 4°C for 1-2 weeks. Store at -20°C for 12 months.

Data Image

SDS-PAGE for Anti-Mouse IGF-1 Monoclonal Antibody



For research use only.