

## Recombinant Human Mesothelin Protein, Alexa Fluor 488-Labeled

---

Catalog	Unit Size
TBP0213-5	5 µg
TBP0213-10	10 µg
TBP0213-20	20 µg

### DESCRIPTION

Mesothelin is a glycosylated protein attached via a GPI linkage and is normally expressed on mesothelial cells lining the pleura, pericardium, and peritoneum, as well as in the developing and postnatal pancreas. It becomes highly up-regulated in mesothelioma and various carcinomas, where it can also be shed into serum or effusions as a soluble form.

Synonyms: CAK1 antigen; CAK1; megakaryocyte potentiating factor; MPF; MPFSMRP; MSLN; Pre-pro-megakaryocyte-potentiating factor; SMR; soluble MPF mesothelin related protein; Mesothelin Protein, AF488-labeled

### SPECIFICATIONS

**Purity:** >95%, by SDS-PAGE.

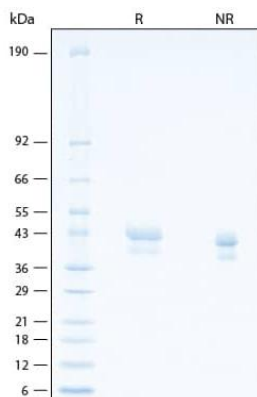
**Endotoxin:** <1.0 EU per 1 µg by the LAL method.

**Predicted Molecular Mass:** 33 kDa

**Formulation:** Supplied as a 0.2 µm filtered solution in PBS with BSA

**Storage:** Store at -20 to -70 °C for up to 6 months, protected from light.

### DATA



Protein on SDS-PAGE under reducing (R) and non reducing (NR) conditions showing bands at 40-45 kDa.