

## E2F1 Rabbit Monoclonal Antibody

Catalog	Unit
TBS10265-20	20 $\mu$ L
TBS10265-100	100 $\mu$ L

### Product Details

**Description:** E2F-1 is a key member of the E2F family of transcription factors, which are critically involved in regulating the cell cycle, DNA replication, apoptosis, and metabolic processes.

**Synonyms:** DmelCG6376; E2F transcription factor 1; Retinoblastoma-associated protein 1; RBAP 1

**Applications:** WB, IHC, IF, FC, IP

**Host:** Rabbit

**Isotype:** IgG

**Species Reactivity:** Human, Mouse, Rat

**Concentration:** 1  $\mu$ g/ $\mu$ l

**Purification:** Protein A affinity purified.

**Formulation:** 1\*TBS (pH7.4), 0.05% BSA, 40% Glycerol. Preservative: 0.05% Sodium Azide.

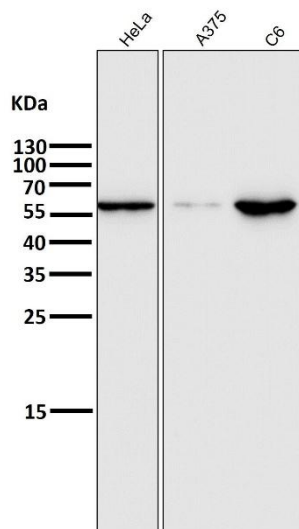
**Clonality:** Monoclonal

**Storage:** Store at  $-20^{\circ}$ C.

### Applications

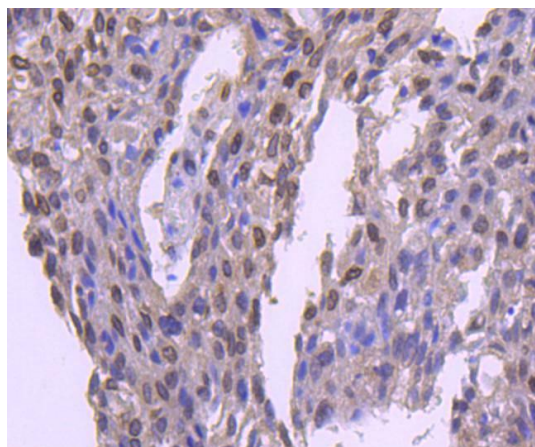
Western blot detection of E2F1 in HeLa, A375, C6 cell lysates using E2F1 Rabbit Monoclonal Antibody (1:1000 diluted). (Fig. 1)

Fig. 1:



Immunohistochemical analysis of paraffin-embedded human breast carcinoma tissue using anti-E2F1 antibody. (1:100-1:200 diluted) (Fig. 2)

Fig. 2:



**For research use only.**