

SP1 Rabbit Monoclonal Antibody

Catalog	Unit
TBS10254-20	20 μ L
TBS10254-100	100 μ L

Product Details

Description: Sp1 (Specificity Protein 1) belongs to the Sp1 C2H2-type zinc-finger protein family and plays widespread roles in cell growth, differentiation, apoptosis, immune responses, DNA damage repair, and chromatin remodeling.

Synonyms: SP 1 antibody; SP1 antibody; Sp1 transcription factor antibody; SP1_HUMAN antibody; Specificity protein 1 antibody; Transcription factor Sp1 antibody; TSFP 1 antibody; TSFP1 antibody

Applications: WB, IHC, IF, ChIP

Host: Rabbit

Isotype: IgG

Species Reactivity: Human, Mouse, Rat

Concentration: 1 μ g/ μ l

Purification: Protein A affinity purified.

Formulation: TBS (pH7.4), 0.05% BSA, 40% Glycerol. Preservative: 0.05% Sodium Azide.

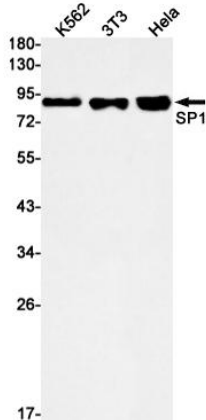
Clonality: Monoclonal

Storage: Store at -20°C .

Applications

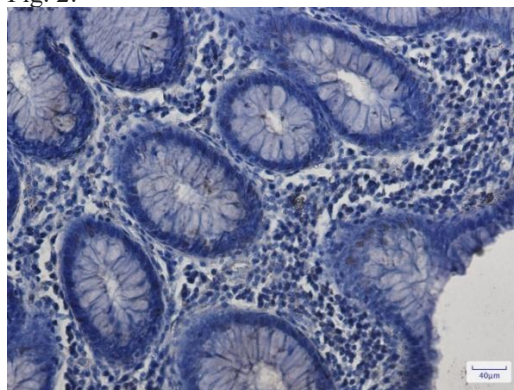
Western blot detection of SP1 in K562, 3T3, HeLa cell lysates using SP1 Rabbit Monoclonal Antibody (1:1000 diluted). Predicted band size: 81kDa. Observed band size: 90kDa. (Fig. 1)

Fig. 1:



Immunohistochemistry of SP1 in paraffin-embedded Human colon cancer tissue using SP1 Rabbit Monoclonal Antibody at dilution 1/50. (Fig. 2)

Fig. 2:



For research use only.