

## Suc-Gly-Gly-Phe-pNA, Chymotrypsin Substrate

---

Catalog	Unit
TBP0134-5MG	5 mg
TBP0134-10MG	10 mg

### Description

Suc-Gly-Gly-Phe-pNA is a specific substrate for the enzyme chymotrypsin, exhibiting a Michaelis constant (Km) of 1.6 mM. This Km value signifies the substrate's moderate affinity for chymotrypsin, representing the concentration required to reach half-maximal enzymatic activity. Suc-Gly-Gly-Phe-pNA is thus a useful tool for quantifying chymotrypsin activity with reliable sensitivity and specificity in biochemical assays.

### Product Details

**Formal Name:** N-(3-Carboxypropionyl)glycylglycyl-N-(p-nitrophenyl)-3-phenyl-L-alaninamide

**Alternative names:** N-Succinyl-Gly-Gly-Phe-p-nitroanilide

**Molecular Formula:** C<sub>23</sub>H<sub>25</sub>N<sub>5</sub>O<sub>8</sub>

**Formula Weight:** 499.47

**CAS Number:** 68982-90-1

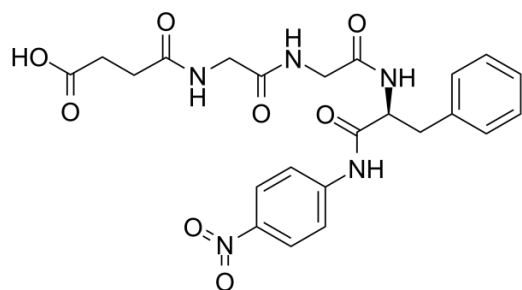
**Purity:** ≥98%

**Formulation:** powder

**Storage:** -20°C

**Stability:** >4 years

**Solubility:** DMSO



For research use only