

## F-Actin Rabbit Polyclonal Antibody

---

Catalog	Unit
TBS10087-100UG	100 ug

### Product Details

**Description:** F-actin is involved in numerous cellular processes including cell motility, cytokinesis, vesicle and organelle transport, muscle contraction, and maintaining cell morphology.

**Applications:** WB, IHC, ICC, ELISA

**Host:** Rabbit

**Species Cross Reactivity:** Human, Mouse, Rat

**Isotype:** IgG

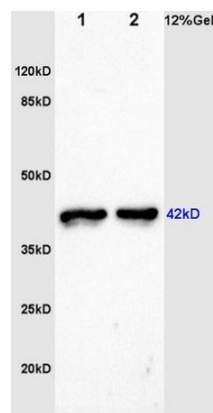
**Concentration:** 1 mg/mL

**Formulation:** 0.01M TBS (pH7.4) with 1% BSA, 0.02% Proclin300 and 50% Glycerol.

**Clonality:** Polyclonal

**Storage:** 4°C

### Images



Western Blotting (dilution range 1:300-5,000), Immunohistochemistry (dilution range 1:200), Immunocytochemistry (dilution range 1:50-200), ELISA (dilution range 1:500-1:1,000).

**For research use only.**