

## RBM20 Rabbit Polyclonal Antibody

Catalog	Unit
TBS10085-20UG	20 ug
TBS10085-100UG	100 ug

### Product Details

**Description:** RBM20 (RNA-binding motif protein 20) is a muscle-specific RNA-binding protein that belongs to the serine-arginine-rich family of splicing factors. It is a key regulator of alternative splicing events in genes selectively expressed in the heart, including those involved in sarcomere assembly, ion transport, and structural organization of cardiomyocytes.

**Applications:** WB, IHC

**Host:** Rabbit

**Species Cross Reactivity:** Human, Mouse, Rat

**Isotype:** IgG

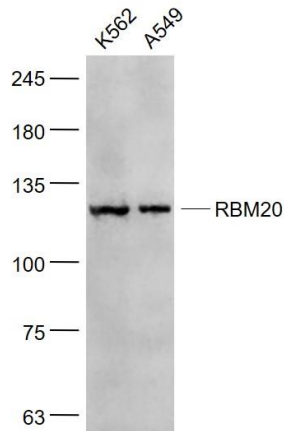
**Concentration:** 1ug/ul

**Formulation:** 0.01M TBS(pH7.4) with 1% BSA, 0.02% Proclin300 and 50% Glycerol.

**Clonality:** Polyclonal

**Storage:** 4°C

### Images



Western Blotting (dilution range 1:300-1:5000), immunohistochemistry (dilution range 1:200-1:400).

**For research use only.**