

Anti-ChAT Mouse Monoclonal Antibody

Catalog	Unit
TBS10082-100UL	100 uL

Product Details

Description: Choline acetyltransferase (ChAT) is an enzyme responsible for the biosynthesis of the neurotransmitter acetylcholine (ACh) from acetyl-CoA and choline. Mutations in the ChAT gene are linked to congenital myasthenic syndrome and other neurodegenerative disorders such as Alzheimer's and Parkinson's diseases.

Applications: WB, ICC/IF, IHC

Host: Mouse

Species Cross Reactivity: Human, Mouse, Rat

Immunogen: Human CHAT Recombinant protein

Isotype: IgG

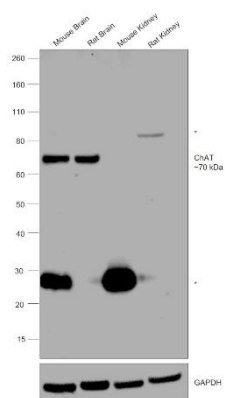
Concentration: 1 mg/mL

Formulation: Liquid with 0.02% sodium azide

Clonality: Monoclonal

Storage: 2-8°C

Images



For Western blot, use a 1:500 dilution. For Immunohistochemistry (IHC) use a 1:500-1:1,000 dilution. For Immunocytochemistry (ICC/IF) use a 2-10 µg/ml dilution.

For research use only.