

Catalog	Unit
TBS10080-100UL	100 uL

### Product Details

**Description:** Cytochrome c oxidase (COX) is the terminal enzyme of the mitochondrial respiratory chain, consisting of 13 subunits that transfer electrons from cytochrome C to oxygen and maintain the proton gradient.

**Applications:** WB, IHC, IP

**Host:** Mouse

**Species Cross Reactivity:** Human

**Immunogen:** Synthetic human COXIV peptide

**Gene ID:** 1327

**Uniprot:** P13073

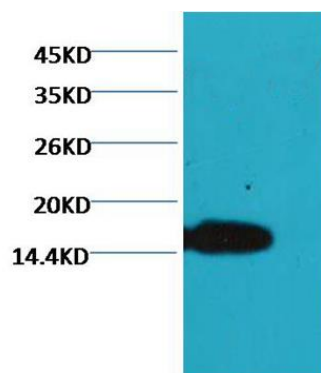
**Concentration:** 0.5 mg/mL

**Formulation:** Phosphate-buffered solution, pH 7.2, containing 0.09% sodium azide

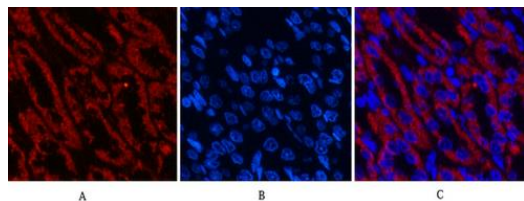
**Clonality:** Monoclonal

**Storage:** -20°C for long term storage

### Images



For a Western blot, use a 1:500 dilution for an antibody concentration of 1.0 µg/mL.



For Immunohistochemistry, use a 1:100 dilution for an antibody concentration of 5.0 µg/mL as shown in image A, and the same dilution and concentration as shown in image B. Image C is a merge of images A and B.

**For research use only.**