

## Repaglinide, Kir6 blocker

Catalog	Unit
TBI4661-20MG	20 mg
TBI4661-100MG	100 mg

### Product Details

**Formal Name:** 2-Ethoxy-4-[2-[[[(1S)-3-methyl-1-(2-piperidin-1-ylphenyl)butyl]amino]-2-oxoethyl]benzoic acid

**Molecular Formula:** C<sub>27</sub>H<sub>36</sub>N<sub>2</sub>O<sub>4</sub>

**Formula Weight:** 452.6

**CAS Number:** 135062-02-1

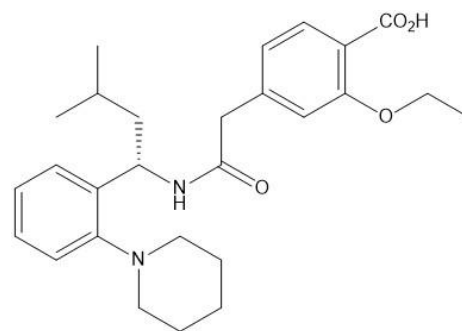
**Purity:** >98%

**Formulation:** Powder

**Solubility:** Soluble in DMSO (up to 25 mg/ml)

**Storage:** -20°C

**Stability:** ≥ 2 years.



### Applications

Kir6 blocker

### Functions

Blocker of the ATP-sensitive potassium channel Kir6 with hypoglycemic activity. Clinically useful antidiabetic agent. It displays 30-fold selectivity for pancreatic Kir6.2/SUR1 over cardiac Kir6.1/SUR2B and Kir6/SUR2A channels. Repaglinide displayed neuroprotective effects in Huntington disease, Parkinson's disease, and ALS via blockade of the DREAM-ATF6 interaction.

### Application Procedures

First dissolved in DMSO (25 mg/ml), then diluted to aqueous buffer. Solutions in DMSO may be stored under an inert atmosphere at -20°C for up to 3 months.

**For research use only.**