

## PDE2A Antibody

---

Catalog	Unit
TBS10048-100UL	100 uL
TBS10048-200UL	200 uL

### Product Details

**Description:** Affinity Purified Phosphodiesterase 2A, cGMP-stimulated Antibody N-epitope

**Verified Applications:** CM, ELISA, ICC/IF, IHC, IP, WB

**Host:** Rabbit

**Species Cross Reactivity:** Bovine, Human, Mouse, Rat

**Immunogen:** Synthetic peptide corresponding to unique amino acid sequence on PDE2A gene.

**Specificity:** This antibody will be labeled PDE2A1, PDE2A2, PDE2A3 and PDE2A4 variants.

**Accession #:** GenBank: EAW74861.1

**Concentration:** 0.7 µg/µl in antibody stabilization buffer

**Form:** Affinity Purified

**Clonality:** Polyclonal

**Determinant:** N-epitope

**Storage:** -20°C for long term storage

### Applications

**Confocal Microscopy:** 1:250-1:1,000

**DB:** 1:10,000

**ELISA:** 1:10,000

**Immunocytochemistry:** 1:250-1:1,000

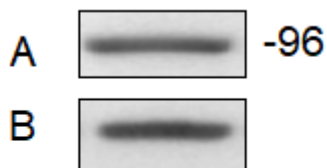
**Immunofluorescence:** 1:150-1:1,000

**Immunohistochemistry:** 1:250-1:1,000

**Immunoprecipitation:** 1:200

**Western Blot:** 1:250-1:1,000

### Images



A) Mouse Spleen

B) GAPDH

**For research use only.**