

## Tau (Phospho-Ser202) Rabbit mAb

Catalog	Unit
TBS10046-50UL	50 ul
TBS10046-100UL	100 ul

### Description

The Tau (Phospho-Ser202) Rabbit mAb could play a role in the establishment and maintenance of neuronal polarity by promoting microtubule assembly and stability. It appears that tau serves as a linker protein between these processes, as the C-terminus binds axonal microtubules while the N-terminus binds neural plasma membrane components.

### Product Details

**Host Species:** Rabbit

**Clonality:** Monoclonal

**Isotype:** Rabbit IgG

**Purification:** Affinity-chromatography

**Applications:** WB, ELISA

**Species Reactivity:** Human Mouse Rat

**Specificity:** Phospho-Tau (S202) Antibody detects endogenous levels of total Phospho-Tau (S202)

**Immunogen Description:** A synthesized peptide derived from human Phospho-Tau (S202)

**Accession No.:** Uniprot:P10636

**Uniprot:** P10636.

**Formulation:** Rabbit IgG in phosphate buffered saline, pH 7.4, 150mM NaCl, 0.02% sodium azide and 50% glycerol.

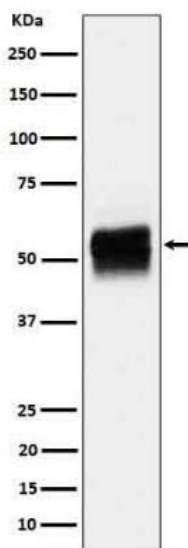
**Storage:** Store at +4A C short term. Store at -20A C long term. Avoid freeze / thaw cycle.

### Applications

**Calculated MW:** 50-70kDa

**WB:** 1:500~1:2000

### Images



Western blot analysis of Phospho-Tau (S202) expression in mouse hippocampus cell lysate.

**For research use only.**