

Description

Gel SmartGlow Stain Solution (Pre-Stain) can be used as a direct replacement for Ethidium Bromide (EtBr) in agarose, and polyacrylamide gel electrophoresis. The stain emits green fluorescence when bound to dsDNA, ssDNA and RNA. Gel SmartGlow Stain exhibits excitation peaks at 290nm and 490nm, allowing it to be used with UV and blue light.

Main Features

- Replaces hazardous EtBr.
- Excitation by UV or blue light.
- Non-mutagenic, environmentally safe.

Pack Size

0.5mL/ each

Concentration

20,000x

Storage

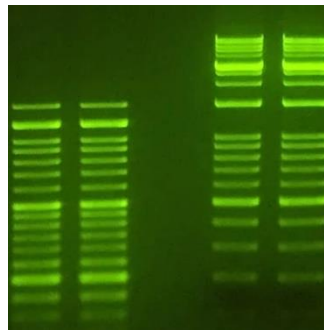
At 4 °C stable for 2 years

Precast Protocol for Agarose Gels

Note: This item is recommended to use for gel pre-stain.

1. Prepare molten agarose gel solution using your standard protocol.
2. Add 5 μ L of the Gel SmartGlow Stain 20,000X stock into the 100mL of the molten agarose gel solution at 1:20,000, and mix thoroughly.
3. Cast the gel and allow it to solidify.
4. Load samples and run the gels using your standard protocol.
5. View the stained gel under UV or Blue light illuminator.

Fig. 1. Gel Stain Image:



For Research Use only