

## Amlodipine, L-type Ca<sup>2+</sup> channel blocker

---

Catalog	Unit
TBI1210-250MG	250 mg
TBI1210-500MG	500 mg

### Product Details

**Molecular Formula:** C<sub>20</sub>H<sub>25</sub>ClN<sub>2</sub>O<sub>5</sub>

**Formula Weight:** 408.89

**CAS Number:** 88150-42-9

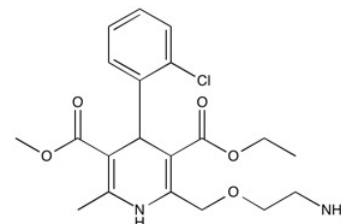
**Purity:** >98%

**Formulation:** powder

**Solubility:** Soluble in DMSO (up to 25 mg/ml), in DMF (up to 25 mg/ml) or in Ethanol (up to 25 mg/ml).

**Storage:** RT

**Stability:** ≥ 1 year.



### Applications

L-type Ca<sup>2+</sup> channel blocker

### Functions

Anti-hypertensive L-type calcium channel blocker, which also benefits the cardiovascular system by stimulating nitric oxide synthase, inhibiting angiotension-induced oxidative stress and cardiovascular injury, and inhibiting monocyte/endothelial adhesion. Amlodipine also has a longer duration of action as compared to other similar calcium channel blockers.

### Application Procedures

First dissolved in DMSO (up to 25 mg/ml), in DMF (up to 25 mg/ml) or in Ethanol (up to 25 mg/ml), then diluted to aqueous buffer. Solutions in DMSO, DMF, or ethanol may be stored at -20°C for up to 3 months.

**For research use only.**