

Citalopram HBr, Serotonin uptake inhibitor

Catalog	Unit
TBI2458-50MG	50 mg
TBI2458-250MG	250 mg

Product Details

Formal Name: 1-[3-(Dimethylamino)propyl]-1-(4-fluorophenyl)-1,3-dihydro-5-isobenzofurancarbitrile hydrobromide

Molecular Formula: C₂₀H₂₁FN₂O·HBr

Formula Weight: 405.31

CAS Number: 59729-32-7

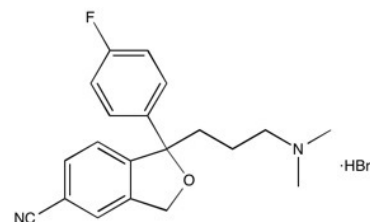
Purity: >98%

Formulation: powder

Solubility: Soluble in Water (up to 4 mg/ml), DMSO (up to 25 mg/ml) or Ethanol (up to 20 mg/ml)

Storage: -20°C

Stability: ≥ 2 years.



Applications

Serotonin uptake inhibitor

Functions

Potent and selective serotonin uptake inhibitor (SSRI) $K_i=5.4$ nM. Has no effect on norepinephrine or dopamine uptake. Displays cardioprotective effects in part by reducing expression of cytokine-induced endothelial adhesion molecules, ICAM-1 and VCAM-1. Clinically useful antidepressant. Attenuates ethanol intake.

Application Procedures

First dissolved in Water (up to 4 mg/ml), DMSO (up to 25 mg/ml) or Ethanol (up to 20 mg/ml), then diluted to aqueous buffer. Solutions in water, DMSO or ethanol may be stored at -20°C for up to 2 months.

For research use only.