
Catalog	Unit
TBI1068-5MG	5 mg
TBI1068-25MG	25 mg

Product Details

Formal Name: 1-[2-(4-Methoxyphenyl)-2-[3-(4-methoxyphenyl)propoxy]ethyl]imidazole, hydrochloride

Molecular Formula: C₂₂H₂₆N₂O₃ · HCl

Formula Weight: 402.90

CAS Number: 130495-35-1

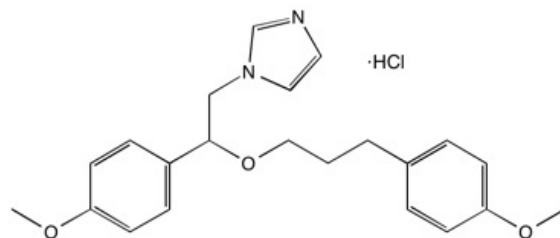
Purity: >98%

Formulation: powder

Solubility: Soluble in DMSO (up to 20 mg/ml) or in Ethanol (up to 20 mg/ml).

Storage: -20°C

Stability: ≥ 1 year.



Applications

TRPC channel blocker

Functions

An inhibitor of receptor-mediated calcium entry (RMCE) with IC₅₀'s of 8.5 μM for ADP stimulated platelets and 11.7 μM for thrombin stimulated platelets. Also inhibits Voltage-gated Ca²⁺ but not ATP-gated Ca²⁺ entry. It has also been shown to block transient receptor potential canonical type (TRPC) channels, high-voltage-activated (HVA) L-type channels, K channels, sarcoplasmic reticulum Ca-ATPase and voltage-gated sodium channels. SKF-96365 is a potent blocker of LVA T-type Ca channels, in particular Ca(V)_{3.1} (IC₅₀ = 0.56 μM).

Application Procedures

First dissolved in DMSO (up to 20 mg/ml) or in Ethanol (up to 20 mg/ml), then diluted to aqueous buffer. Solutions in DMSO or distilled water may be stored at -20°C for up to 3 months.

For research use only.