

## CPI-455, Lysine demethylase KDM5 inhibitor

Catalog	Unit
TBI4035-5MG	5 mg
TBI4035-25MG	25 mg

### Product Details

**Formal Name:** 7-Oxo-5-phenyl-6-propan-2-yl-1H-pyrazolo[1,5-a]pyrimidine-3-carbonitrile

**Molecular Formula:** C<sub>16</sub>H<sub>14</sub>N<sub>4</sub>O

**Formula Weight:** 278.32

**CAS Number:** 1628208-23-0

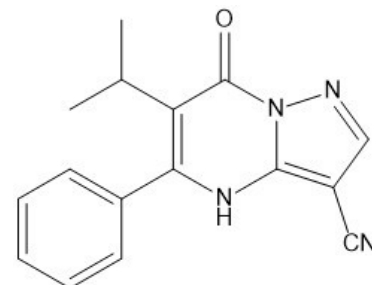
**Purity:** >98%

**Formulation:** powder

**Solubility:** Soluble in DMSO (up to at least 25 mg/ml)

**Storage:** -20°C

**Stability:** ≥ 1 year.



### Applications

Lysine demethylase KDM5 inhibitor

### Functions

CPI-455 (1628208-23-0) is a potent (IC<sub>50</sub> = 10 nM) and selective inhibitor of the lysine demethylase KDM5 (equal inhibition of KDM5A, 5B, 5C). CPI-455 reduced the number of drug-tolerant persister cancer cells (DTPs) in a dose-dependent, KDM5-dependent manner in multiple cell lines treated with standard chemotherapy or targeted agents. CPI-455 synergized with 5-aza-2'-deoxycytidine (DAC) to reduce the viability of luminal breast cancer cells in vitro. KDM5 demethylases have recently been shown to repress the immune response to tumors via suppression of STING.

### Application Procedures

First dissolved in DMSO (up to at least 25 mg/ml), then diluted to aqueous buffer. Solutions in DMSO or ethanol may be stored at -20° for up to 3 months.

**For research use only.**