

KL101, CRY1 stabilizer (selective)

Catalog	Unit
TBI3907-5MG	5 mg
TBI3907-25MG	25 mg

Product Details

Formal Name: N-(2-(2,4-Dimethylphenyl)-2,6-dihydro-4H-thieno[3,4-c]pyrazol-3-yl)-3,4-dimethylbenzamide

Molecular Formula: C₂₂H₂₃N₃OS

Formula Weight: 377.50

CAS Number: 396721-89-4

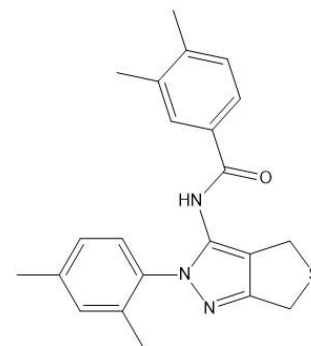
Purity: >98%

Formulation: powder

Solubility: Soluble in DMSO (up to 25 mg/ml)

Storage: -20°C

Stability: ≥ 1 year.



Applications

CRY1 stabilizer (selective)

Functions

An isoform-selective stabilizer of the circadian clock protein CRY1. It dose-dependently lengthened the circadian period in Bmal1-dLuc and Per2-dLuc reporter cells. KL101 strongly enhanced rosiglitazone-dependent brown adipocyte differentiation revealing the importance of CRY-dependent regulation of energy metabolism and a possible new lead for anti-obesity therapeutics.

Application Procedures

First dissolved in DMSO (up to 25 mg/ml), then diluted to aqueous buffer.

For research use only.