

Catalog	Unit
TBI1352-5MG	5 mg
TBI1352-25MG	25 mg

Product Details

Formal Name: 6-Chloro-7-[[2-(4-morpholinyl)ethyl]amino]-5,8-quinolinedione

Molecular Formula: C₁₅H₁₆ClN₃O₃

Formula Weight: 321.77

CAS Number: 383907-43-5

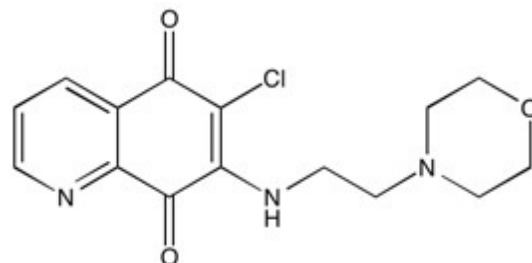
Purity: >98%

Formulation: powder

Solubility: Soluble in DMSO (up to 15 mg/ml), or in Ethanol (up to 55 mg/ml).

Storage: -20°C

Stability: ≥ 2 years.



Applications

Cdc25 Phosphatase inhibitor

Functions

Potent, selective and irreversible inhibitor of CDC25 phosphatases, $K_i=29, 95$ and 89 nM for human CDC25A, B2 and C respectively and >20- and >450-fold selective over VHR and PTP1B. Arrests cells at G1 and G2/M and inhibits cdk1 and 2 activation. Inhibits the growth of a variety of human tumor cell lines. Acts via irreversible oxidation of the catalytic cysteine of CDC25.

Application Procedures

First dissolved in DMSO (up to 15 mg/ml), or in Ethanol (up to 55 mg/ml), then diluted to aqueous buffer. Solutions in DMSO or ethanol may be stored at -20° for up to 1 month.

For research use only.