

BAPTA-AM, Intracellular calcium sponge

Catalog	Unit
TBI1203-5MG	5 mg
TBI1203-25MG	25 mg

Product Details

Formal Name: 1,2-bis-(2-Aminophenoxy)ethane-N,N,N',N'-tetraacetic acid, tetraacetoxymethyl ester

Molecular Formula: C₃₄H₄₀N₂O₁₈

Formula Weight: 764.70

CAS Number: 126150-97-8

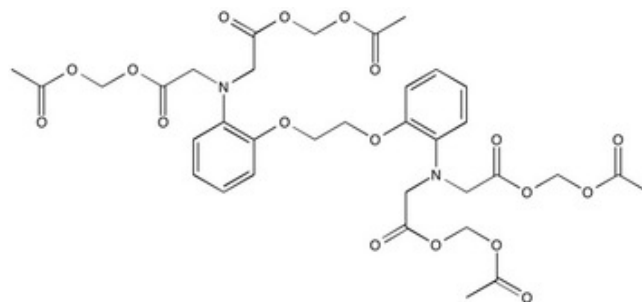
Purity: >98%

Formulation: powder

Solubility: Soluble in DMSO (up to 15 mg/ml), in DMF (up to 25 mg/ml) or in Ethanol (up to 5 mg/ml).

Storage: -20°C

Stability: ≥ 1 year.



Applications

Intracellular calcium sponge

Functions

BAPTA-AM is a selective cell permeable Ca²⁺ chelator. It is a widely used intracellular calcium sponge. Rapidly taken up by cells where it is irreversibly hydrolyzed to BAPTA by intracellular esterases. Pretreatment of cells with BAPTA-AM inhibits thapsigargin-induced responses.

Application Procedures

First dissolved in DMSO (up to 15 mg/ml), in DMF (up to 25 mg/ml) or in Ethanol (up to 5 mg/ml), then diluted to aqueous buffer. Solutions in DMSO, DMF or ethanol may be stored at -20°C for up to 1 week.

For research use only.