

## Fluoxetine HCl, Serotonin reuptake inhibitor (SSRI)

Catalog	Unit
TBI2728-100MG	100 mg
TBI2728-1G	1 g

### Product Details

**Formal Name:** (±)-N-Methyl-γ-[4-(trifluoromethyl)phenoxy]benzenepropanamine, hydrochloride

**Alternate Names:** LY-110,140

**Molecular Formula:** C<sub>17</sub>H<sub>18</sub>F<sub>3</sub>NO · HCl

**Formula Weight:** 345.79

**CAS Number:** 56296-78-7

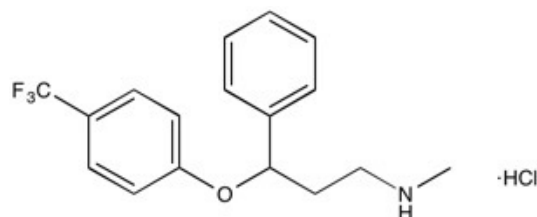
**Purity:** >98%

**Formulation:** powder

**Solubility:** Soluble in DMSO (up to 35 mg/ml) or in Water (up to 4 mg/ml)

**Storage:** RT

**Stability:** ≥ 2 years.



### Applications

Serotonin reuptake inhibitor (SSRI)

### Functions

A selective serotonin reuptake inhibitor (SSRI) with high selectivity for the serotonin transporter (K<sub>d</sub>=0.81 nM) over the norepinephrine (K<sub>d</sub>=240 nM) and dopamine (K<sub>d</sub>=3.6 mM) transporters. A clinically useful antidepressive agent. Has shown some potential in autism spectrum disorders. Attenuates neuroinflammation in early brain injury after subarachnoid hemorrhage. Orally active and active in vivo. Increases proliferation of neuronal precursors derived from human embryonic stem cells, inducing differentiation and strongly enhancing neuronal characteristics.

### Application Procedures

First dissolved in DMSO (up to 35 mg/ml) or in Water (up to 4 mg/ml), then diluted to aqueous buffer. Solutions in DMSO or distilled water may be stored at -20°C for up to 3 months.

**For research use only.**