

Nimodipine, L-type Ca²⁺ channel blocker

Catalog	Unit
TBI1321-100MG	100 mg
TBI1321-500MG	500 mg

Product Details

Formal Name: 1,4-Dihydro-2,6-dimethyl-4-(3-nitrophenyl)-3,5-pyridinedicarboxylic acid 2-methoxyethyl 1-methylethyl ester

Alternate Names: Bay-e 9736

Molecular Formula: C₂₁H₂₆N₂O₇

Formula Weight: 418.44

CAS Number: 66085-59-4

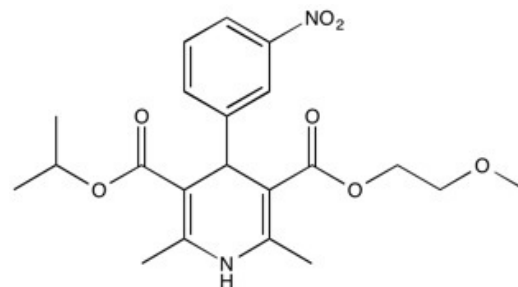
Purity: >98%

Formulation: powder

Solubility: Soluble in DMSO (up to 40 mg/ml).

Storage: RT

Stability: ≥ 2 years.



Applications

L-type Ca²⁺ channel blocker

Functions

An L-type calcium channel blocker. Prevents age-induced learning deficits in a rat model. Facilitates recovery of function after brain damage and displays neuroprotective effects. Promotes remyelination in a mouse model of multiple sclerosis. In clinical use for reduction of cerebral vasospasm following subarachnoid hemorrhage.

Application Procedures

First dissolved in DMSO (up to 40 mg/ml), then diluted to aqueous buffer. Solutions in DMSO may be stored at -20°C for up to 3 months.

For research use only.