

Matrine, Induces RIP3 necroptosis

Catalog	Unit
TBI4612-10MG	10 mg
TBI4612-50MG	50 mg

Product Details

Formal Name: (7aS,13aR,13bR,13cS)-Dodecahydro-1H,5H,10H-dipyrido[2,1-f:3',2',1'-ij][1,6]naphthyridin-10-one

Alternate Names: Matridin-15-one

Molecular Formula: C₁₅H₂₄N₂O

Formula Weight: 248.36

CAS Number: 519-02-8

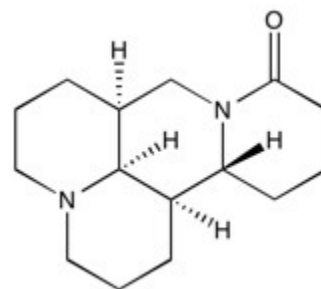
Purity: >98%

Formulation: powder

Solubility: Soluble in Water (up to at least 25 mg/ml)

Storage: -20°C

Stability: ≥ 1 year.



Applications

Induces RIP3 necroptosis

Functions

Matrine is a natural product found in the plant *Sophora flavescens*. It has been found to possess myriad biological activities including a positive inotropic effect, reduced glucose intolerance and hepatic steatosis in a mouse model via activation of HSP723, various anti-cancer effects. Matrine has also recently been shown to induce RIP3-dependent necroptosis in cholangiocarcinoma cells.

Application Procedures

First dissolved in Water (up to at least 25 mg/ml), then diluted to aqueous buffer. Solutions in distilled water may be stored at -20°C for up to 3 months.

For research use only.