

## Reserpine, VMAT1/2 inhibitor (Irreversible)

Catalog	Unit
TBI2689 - 1G	1 g

### Product Details

**Formal Name:** (3 $\beta$ ,16 $\beta$ ,17 $\alpha$ ,18 $\beta$ ,20 $\alpha$ )-11,17-dimethoxy-18-[(3,4,5-trimethoxybenzoyl)oxy]-yohimban-16-carboxylic acid, methyl ester

**Alternate Names:** NSC59272

**Molecular Formula:** C<sub>33</sub>H<sub>40</sub>N<sub>2</sub>O<sub>9</sub>

**Formula Weight:** 608.7

**CAS Number:** 50-55-5

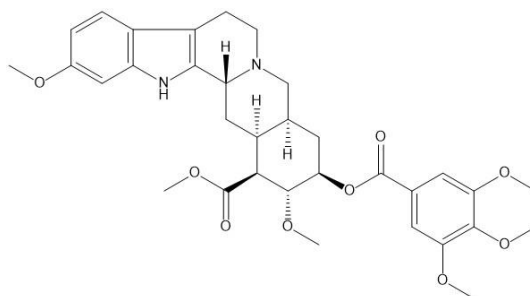
**Purity:** >98%

**Formulation:** Powder

**Solubility:** Soluble in DMSO (35 mg/ml)

**Storage:** -20°C

**Stability:**  $\geq$  2 years.



### Applications

VMAT1/2 inhibitor (Irreversible)

### Functions

Reserpine (50-55-5) is an indole alkaloid isolated from *Rauwolfia serpentina* which acts as a potent antihypertensive agent. Irreversibly inhibits both isoforms of vesicular monoamine transporter VMAT1 and 2,  $K_i = 34$  and 12 nM, respectively. May be used to pharmacologically deplete monoamines in various animal models. Inhibits the multidrug resistance protein P-glycoprotein,  $IC_{50} = 0.5$  mM. Reserpine-induced hypokinesia is considered a useful animal model of Parkinson's disease.

### Application Procedures

First dissolved in DMSO (35 mg/ml), then diluted to aqueous buffer. Solutions in DMSO may be stored at -20°C for up to 3 months.

### Relative Products

TBI1170	Mitomycin C
TBI1345	E64, Cysteine protease inhibitor
TBI1347	E64d, Cysteine protease inhibitor
TBI2064	Chromomycin A3
TBI2069	Cytochalasin B
TBI2794	5-EDU, DNA Click labeling probe
TBI2071	Cytochalasin D
TBI1286	Bestatin, Aminopeptidase inhibitor
TBI2140	Gemcitabine
TBI2058	Aphidicolin, DNA polymerase Inhibitor

**For research use only.**