

Seriniquinone, Autophagy inducer

Catalog	Unit
TBI1608 - 1MG	1 mg
TBI1608 - 5MG	5 mg

Product Details

Formal Name: Dinaphthol[2,3-b:2',3'-d]thiophene-5,7,12,13-tetraone

Molecular Formula: C₂₀H₈O₄S

Formula Weight: 344.34

CAS Number: 22200-69-7

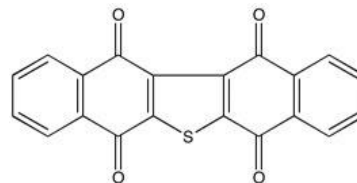
Purity: >98%

Formulation: Powder

Solubility: Soluble in DMSO or DMF (up to 55 mg/ml)

Storage: -20°C

Stability: ≥ 2 years.



Applications

Autophagy inducer

Functions

Seriniquinone (22200-69-7) is a new natural product isolated from a marine bacterium of the genus *Serinicoccus*. Displays selective toxicity against a distinct set of cell lines (within the NCI 60 panel) predominantly melanoma. Upon cellular treatment, seriniquinone was found to localize in the endoplasmic reticulum. Within 3 hours cells underwent autophagy followed by death via a caspase-9 apoptotic pathway. The target of seriniquinone was identified as the small protein, dermcidin, as determined using an immunoaffinity approach.

Application Procedures

First dissolved in DMSO or DMF (up to 55 mg/ml), then diluted to aqueous buffer. Solutions in DMSO or DMF may be stored at -20°C for up to 3 months.

Relative Products

TBI1170	Mitomycin C
TBI1345	E64, Cysteine protease inhibitor
TBI1347	E64d, Cysteine protease inhibitor
TBI2064	Chromomycin A3
TBI2069	Cytochalasin B
TBI2794	5-EDU, DNA Click labeling probe
TBI2071	Cytochalasin D
TBI1286	Bestatin, Aminopeptidase inhibitor
TBI2140	Gemcitabine
TBI2058	Aphidicolin, DNA polymerase Inhibitor

For research use only.