

Catalog	Unit
TBI1325 - 1G	1 g
TBI1325 - 5G	5 g

Product Details

Formal Name: 5-Chloro-N-[2-[4-[[[(cyclohexylamino)carbonyl]amino]sulphonyl]phenyl]ethyl]-2-methoxybenzamide

Alternate Names: Glibenclamide

Molecular Formula: C₂₃H₂₈ClN₃O₅S

Formula Weight: 494.01

CAS Number: 10238-21-8

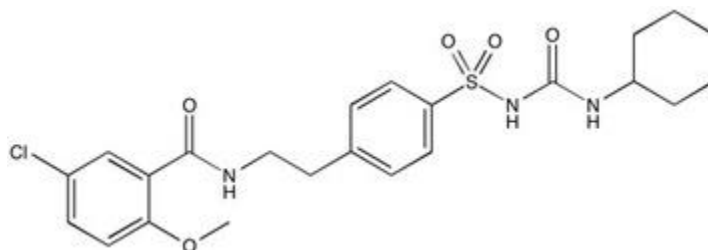
Purity: ≥98%

Formulation: Powder.

Solubility: Soluble in DMSO (up to 45 mg/ml) or in Ethanol (up to 2 mg/ml with warming).

Storage: RT

Stability: ≥ 2 years.



Applications

K-ATP channel blocker

Functions

Second generation oral hypoglycemic agent. Acts via ATP-dependent K⁺ channel (Kir6, KATP) block. Inhibits Kir currents in the pancreas, causing an increase in intracellular Ca²⁺ and insulin secretion. Also inhibits recombinant CFTR Cl⁻ channels with an IC₅₀ of 20 μM. Cell permeable.

Application Procedures

First dissolved in DMSO (up to 45 mg/ml) or in Ethanol (up to 2 mg/ml with warming), then diluted to aqueous buffer. Solutions in DMSO or ethanol may be stored at -20°C for up to 3 months.

Relative Products

TBI1170	Mitomycin C
TBI1345	E64, Cysteine protease inhibitor
TBI1347	E64d, Cysteine protease inhibitor
TBI2064	Chromomycin A3
TBI2069	Cytochalasin B
TBI2794	5-EDU, DNA Click labeling probe
TBI2071	Cytochalasin D
TBI1286	Bestatin, Aminopeptidase inhibitor
TBI2140	Gemcitabine
TBI2058	Aphidicolin, DNA polymerase Inhibitor

For research use only.