

Phospho-Tau Thr217 (p-tau217) Monoclonal Antibody

Specification Sheet

Catalog Number	Unit Size
TBS10022-0.1MG	0.1mg
TBS10022-0.5MG	0.5mg

Description: Phospho-Tau Thr217 (p-tau217) Mouse Monoclonal Antibody. This antibody can be paired with rabbit polyclonal antibody (TBS10021) for ELISA displayed in Fig. 1. It can be used for Western Blot, and IHC.

Specificity: This antibody reacts with synthesized p-tau217 peptide.

Host Animal: Balb/c mouse.

Isotype: IgG1.

Immunogen: P-tau217 peptide.

Format: Purified, liquid.

Purification: DEAE chromatography.

Concentration: 0.5 mg/ml.

Affinity Constant: Not determined.

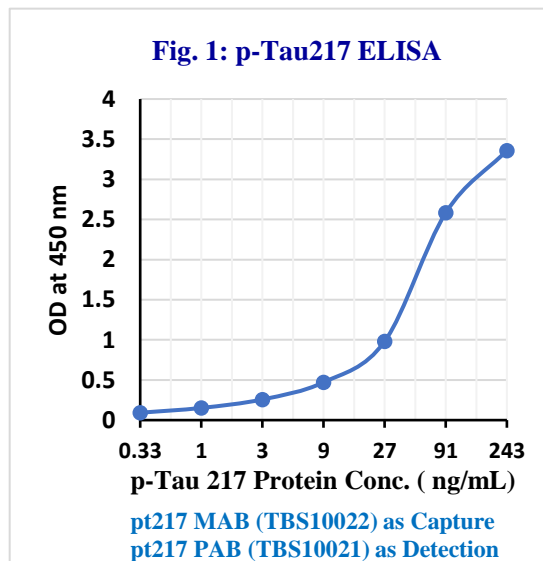
Buffer: 10 mM PBS, 0.05% NaN₃, pH 7.2.

Pairing Assays: Not determined.

Purity: >95% by HPLC and SDS-PAGE.

Application: This antibody (TBS10022) can be paired with rabbit polyclonal antibody (TBS10021) for ELISA. It can be used for Western Blot, and IHC.

Storage: -20°C for 5 years.



For Research Use only