

**Cell DNA extraction Kit (Catalog# TBS6007)****DESCRIPTION**

Tribo™ Cell DNA extraction kit provides a simple and rapid method for the isolation of total DNA from cultured cells. Specially formulated buffer system minimizes RNA copurified with DNA without RNase A treatment. If RNA-free genomic DNA is required, RNase A can be treated with.

**Features and Benefits**

- Accurate and consistent DNA extraction from cultured cell line.
- Simple and safe procedure.
- Ready for use in PCR, Southern blotting, and other enzymatic reactions.

**Component list**

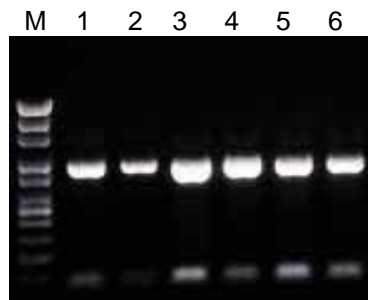
Extraction Buffer	<b>25 mL</b>
Proteinase K	<b>1 mL 20 mg/mL</b>
TE Buffer	<b>50 mL</b>

**Storage:** Supplied for 1000 samples. Store kit at 4°C (except Proteinase K, store at -20°C).

**Procedure**

- Prepare enough digestion solution by mix 1 part Proteinase K with 20 parts extraction buffer (1:20), 20 µL digest solution is need for each 5x10<sup>6</sup> Cells.
1. For adherent cell, scraps cell from culture plate or flask, wash cell once with cold PBS, and transfer 5x10<sup>6</sup> Cells into a 1.5 mL eppendorf tube. For suspension cell, just wash the cell once with cold PBS, and transfer 5x10<sup>6</sup> Cells into a 1.5 mL eppendorf tube.
  2. Add 20 µL digest solution into each tube.
  3. Close tube. Invert to mix. Set aside until all samples are brought to step 4.
  4. Incubate tubes at 55°C-60°C for 30-60min.

5. Add 40 µL ddH<sub>2</sub>O to each tube, vortex, quick spin (13000 rpm for 4 min), and genomic DNA stays in the supernatant. Transfer supernatant into new tubes.
6. Add 200 µL isopropanol (not provided) to the supernatant and vortex the tubes for 2 min.
7. Spin 14,000 rpm for 5 min.
8. Decant the supernatant and wash the pellet with 70% ethanol 3 times.
9. Air-dry DNA 10-20 min, and then add 50 µL TE buffer or ddH<sub>2</sub>O to dissolve the pellet.
10. Take 5 µL to do PCR or store at -20°C for later use.



PCR reaction was performed with extracted cell DNA using Cell DNA extraction kit. Templates were isolated from NIH/3T3, HeLa, PANC-1, HL-60, CHO and Jurkat cell line.  
M: 1 kb ladder marker.

**RELATED PRODUCTS:**

- Blood DNA Extraction Kit (catalog# TBS6004)
- Tissue DNA Extraction Kit (catalog# TBS6006)
- 2x qPCR Start Hot Super Mix (catalog# TBS4001)
- 2x PCR Start Hot Master Mix Kit(catalog# TBS4002)