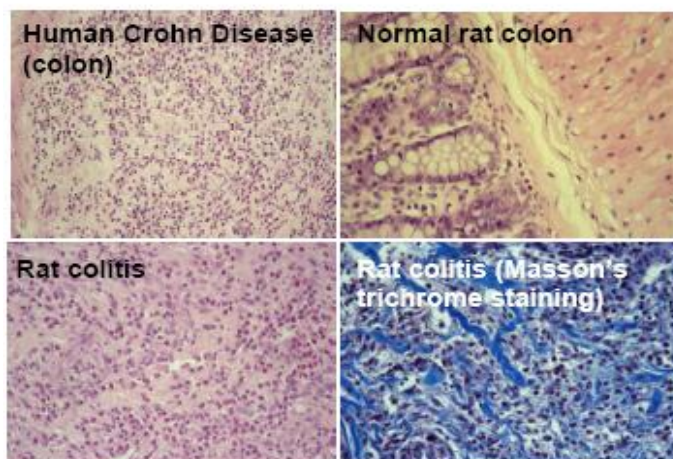


Rodent Immune Disease Models

1. **Rat autoimmune inflammatory bowel disease model:** Autoimmune inflammatory bowel disease models are generated by using TNBS to create a chronic colonic inflammation in rat to mimic human inflammatory bowel diseases. This model has typical features of human inflammatory bowel diseases and can be used to evaluate novel therapeutic approaches and study the disease mechanism.
2. **Murine allergic skin disease models:** Allergic skin disease models are generated by using antigen(s) to immune animals to induce allergic skin response. This model can be used to test novel therapeutic approaches or antigenic potential for new chemicals and substance.
3. **Murine anaphylaxis models (Type I allergy):** Passive cutaneous anaphylaxis and active anaphylaxis models are created in rodent animals. Those models can be used to evaluate novel therapeutic approaches and test the allergic potentials of food, drug, cosmetics and other new chemicals that will be applied to human.
4. **Skin patch Test:** Skin patch test is widely used for evaluating chemical's irritation and allergic potential.



TNBS-induced rat autoimmune inflammatory bowel disease model