

## Cell DNA extraction Kit (Catalog# TBS6007)

**DESCRIPTION**

Tribo™ Cell DNA extraction kit provides a simple and rapid method for the isolation of total DNA from cultured cells. Specially formulated buffer system minimizes RNA copurified with DNA without RNase A treatment. If RNA-free genomic DNA is required, RNase A can be treated with.

**Features and Benefits**

- Accurate and consistent DNA extraction from cultured cell line.
- Simple and safe procedure.
- Ready for use in PCR, Southern blotting, and other enzymatic reactions.

**Component list**

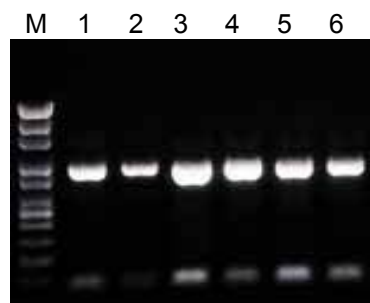
Extraction Buffer	<b>25 mL</b>
Proteinase K	<b>1 mL 20 mg/mL</b>
TE Buffer	<b>50 mL</b>

**Storage:** Supplied for 1000 samples. Store kit at 4°C (except Proteinase K, store at -20°C).

**Procedure**

- Prepare enough digestion solution by mix 1 part Proteinase K with 20 parts extraction buffer (1:20), 20  $\mu$ L digest solution is need for each  $5 \times 10^6$  Cells.
1. For adherent cell, scraps cell from culture plate or flask, wash cell once with cold PBS, and transfer  $5 \times 10^6$  Cells into a 1.5 mL eppendorf tube. For suspension cell, just wash the cell once with cold PBS, and transfer  $5 \times 10^6$  Cells into a 1.5 mL eppendorf tube.
  2. Add 20  $\mu$ L digest solution into each tube.
  3. Close tube. Invert to mix. Set aside until all samples are brought to step 4.
  4. Incubate tubes at 55°C-60°C for 30-60min.

5. Add 40  $\mu$ L ddH<sub>2</sub>O to each tube, vortex, quick spin (13000 rpm for 4 min), and genomic DNA stays in the supernatant. Transfer supernatant into new tubes.
6. Add 200  $\mu$ L isopropanol (not provided) to the supernatant and vortex the tubes for 2 min.
7. Spin 14,000 rpm for 5 min.
8. Decant the supernatant and wash the pellet with 70% ethanol 3 times.
9. Air-dry DNA 10-20 min, and then add 50  $\mu$ L TE buffer or ddH<sub>2</sub>O to dissolve the pellet.
10. Take 5  $\mu$ L to do PCR or store at -20°C for later use.



PCR reaction was performed with extracted cell DNA using Cell DNA extraction kit. Templates were isolated from NIH/3T3, HeLa, PANC-1, HL-60, CHO and Jurkat cell line.  
M: 1 kb ladder marker.

**RELATED PRODUCTS:**

- Blood DNA Extraction Kit (catalog# TBS6004)
- Tissue DNA Extraction Kit (catalog# TBS6006)
- 2x qPCR Start Hot Super Mix (catalog# TBS4001)
- 2x PCR Start Hot Master Mix Kit(catalog# TBS4002)