

## Ready-to-use 100bp DNA Ladder(Catalog# TBS4031)

### DESCRIPTION

Ready-to-use format of 100 bp DNA ladder is composed of nine bands of 100 bp, 200 bp, 300 bp, 400 bp, 500 bp, 600 bp, 800 bp, 1,000 bp and 1,500 bp. The 500-bp band with higher concentration is easily distinguishable from the others. It is premixed with 1x loading buffer for direct loading on gel

### APPLICATIONS

- DNA marker

### KIT CONTENTS

TBS 4031- 0.5: 0.5 mL x1  
TBS 4031- 1.0: 0.5 mL x2

Premixed in 1x loading buffer containing 5% Glycerol, 0.02% bromophenol blue, 0.02% xylene cyanol, 10 mM Tris-HCl (pH=7.5), 1 mM EDTA.  
Concentration: 100 ng/ $\mu$ L

### STORAGE CONDITIONS

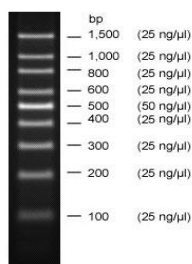
The kit is stored at -20°C for long-term storage.

### KEY FEATURES

**Convenient:** Ready-to-use for direct loading on gel.

**No Loading Dye Required:** Do not need to mix with loading dye.

Example



2% agarose gel

### RECOMMENDED LOADING VOLUME

5  $\mu$ L (or 1 $\mu$ L/mm width of gel well) is recommended for use.

### NOTE

- 6x DNA loading buffer can be ordered separately.
- Ready-to-use format is premixed with DNA loading buffer containing 5% Glycerol, 0.02% bromophenol blue, 0.02% xylene cyanol.

### QUALITY CONTROL

- Agarose gel analysis shows that the bands between 100 bp and 1,500 bp are accurate in size and distinguishable. The band of 500 bp is more easily identified than any other bands.
- 5  $\mu$ L quantities of the DNA marker do not show any visible degradation after incubation in restriction enzyme buffer overnight at 37°C.

### RELATED PRODUCTS

DNA Loading Buffer (Catalog#TBS5018 or TBS5023)  
Tail DNA Extraction kit (Catalog# TBS6005)  
Fast DNA Extraction kit (Catalog# TBS6008)  
2x Regular PCR Kit ( Catalog#TBS4004)  
2x PCR Red Mix kit (Catalog# TBS4005)

**This product is for *in vitro* research use only and is not intended for use in humans or animals in therapeutic or diagnostic procedures.**