

ONE IS MORE THAN ENOUGH FOR gDNA EXTRACTION



Save time and money

Sample Type	GeneAll	Company Q	Company L	Company M
Blood	○	○	○	○
Serum	○			○
Plasma	○			○
Nucleated Blood	○			
Dried Blood spot	○			
Buffy coat	○			
Body Fluid	○			
Saliva	○			○
Urine	○		○	
Cultured Cells	○	○		
Gram(-) bacteria	○	○	○	○
Gram(+) bacteria	○	○	○	○
Yeast	○		○	○
Tissue	○	○	○	○
Marine organism	○			
Rodent Tail	○	○	○	
FFPE Tissue	○	○	○	
Buccal Swab	○		○	
Insect	○			
Hair	○			
Sperm	○			
DNA virus	○			
Sputum	○			
BAL	○			
Pleural Fluid	○			
Processed Food and Cheese	○			

Introduction

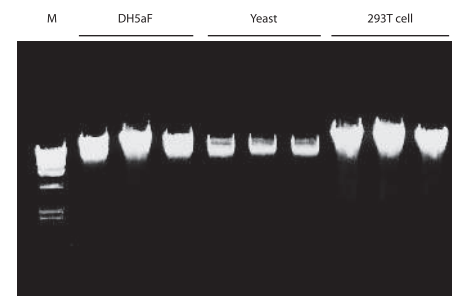
When it comes to process various clinical samples for gDNA extraction, we want you so have something that simplified one, not make it complicated. It is our mission to give an all-in-one product that provides maximized profit. When linked to cost effectiveness and best results, Exgene Cell SV will be your top choice.

Forget using different products for different starting material. Exgene Cell kits' optimized protocols allow you to access to deal more starting materials and increases productivity which could be achieved by "saving time and money", minimizing cost and waste. Enhancing a versatile experience with Exgene Cell Kit.

Feature

- Spin or vacuum column format
- Mini and maxi scale DNA isolation specialized for handling various samples
- Buffer system allows DNA isolation from yeast and gram-positive bacteria
- High purity DNA for immediate downstream application in under 30 minutes

Consistent Result from cell samples from various species



Genomic DNA prepared from a several species of cells using Exgene™ Cell SV kit. 5 µl out of 100 µl eluate was resolved on 0.8 % agarose gel.
M : Lambda-HindIII